

Sawa®



INDUSTRY, MUNICIPAL SANITARY SEWER

## 1 PNEUMATIC PIPE PLUGS

1.1 Plugs of smaller diameters PLUGY and PLUGSY	4
1.2 Multi-size long plugs PLUGY DC	6
1.3 Multi-size plugs PLUGY G and PLUGSY GM	7
1.4 House connection test set	8
1.5 Multi-size plugs for larger pipeline diameters PLUGY and PLUGSY	10
1.6 Protective sleeves	12
1.7 Multi-size egg shape plugs PLUGY and PLUGSY EI	13
1.8 High performance plugs HPF	14
1.9 Multi-size pillow-type plugs PLUGY and PLUGSY	16
1.10 Multi-size plugs with larger bypass PLUGSY VP	18
1.11 Plugs for gully / manhole testing PLUGSY VJ	20
1.12 Multi-size high-pressure plugs PLUGY HP 6 bar and 12 bar	21
1.13 Multi-size high-pressure plugs PLUGY HP 30 bar	22

3

## 2 PNEUMATIC PIPE REHABILITATION PACKERS

2.1 Flexible packers	24
2.2 Long packers	26
2.3 Lateral packers	28
2.4 Packers HP-T90°	30
2.5 Short packers	31

23

## 3 THIS IS US

32

## 4 WARRANTY

33

## 5 MATERIALS AND TABLE OF RESISTANCE

34

# PNEUMATIC PIPE PLUGS

# 1

Savatech plugs are made of natural and synthetic rubber compounds mixed in our own Mixing-room under constant quality surveillance by Savatech ISO approved Laboratory. Optimization of existing materials and development of new materials is on-going process to assure excellent quality of final products.

Savatech single and multisize plugs can be used in all types of pipelines and provide good non-skid, compression abilities and have excellent stretching and sealing characteristics.

Well trained personnel with many years of experience, flexible production, design of custom made products and strict final inspections reflect in Savatech premium quality products and services.

All products are tested within our quality assurance department under strict testing method which enables us to offer first class products. Production process is standardized, we have well trained employees and flexible production, which enables us to offer excellent customer service.



FOLLOW  
INSTRUCTIONS



PROVIDE PLUG  
SUPPORT



USAGE RANGE  
CLEARLY  
INTEGRATED ONTO  
THE PRODUCT



RELEASE BACK  
PRESSURE

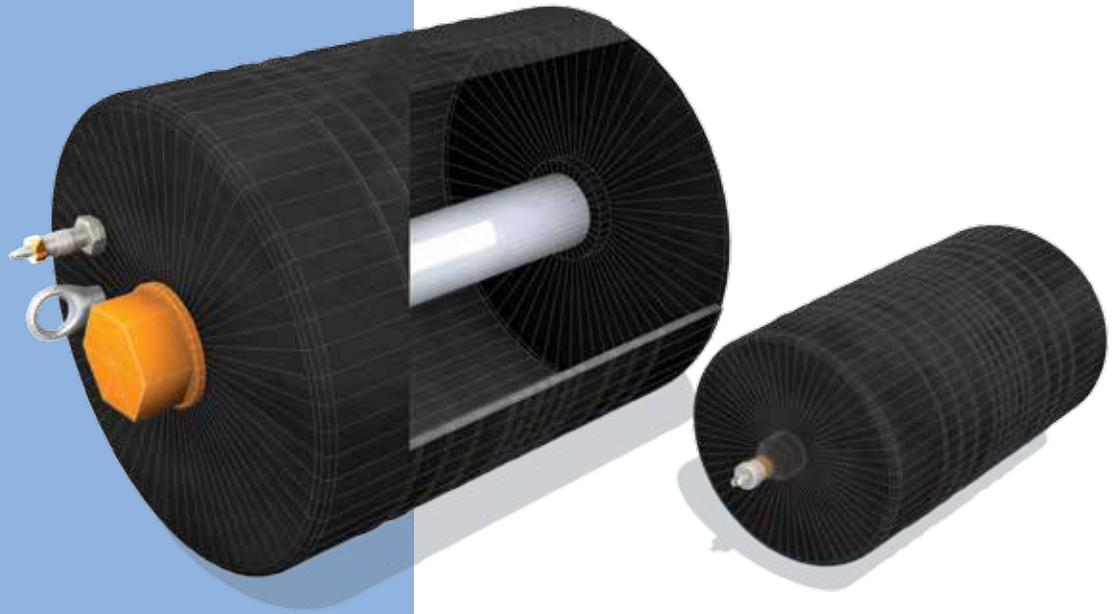
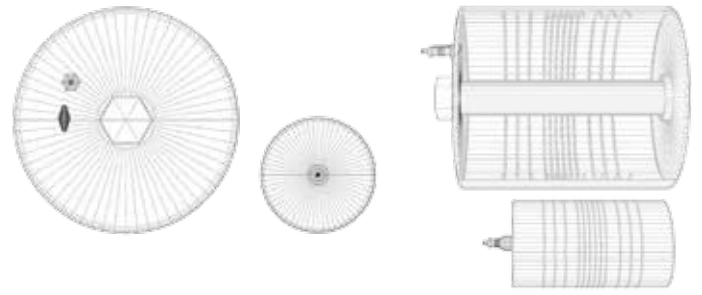


CLEAN THE PIPE  
BEFORE USAGE



# PLUGS OF SMALLER DIAMETERS PLUGY AND PLUGSY

## 1.1



Savatech plugs of smaller diameters PLUGY and PLUGSY can be used in all types of pipelines. Since these plugs are not reinforced with cord, they exhibit excellent stretching and sealing characteristics in pipe diameters from 20 mm up to 305 mm.

Savatech plug and plugsy up to size 200 mm are equipped with a tyre inflation valve which is vulcanized into the plug. Plugs of other sizes are equipped with an inflation valve, which is easily replaced with a quick action coupling, if required. Eye bolts/chain enable lifting and lowering of plugs, when a poly-lift line is used.



ALSO AVAILABLE IN  
OIL RESISTANT  
QUALITY



AVAILABLE  
IN USAGE RANGE  
FROM 20 mm  
UP TO 305 mm



EXTRA SHORT FOR  
EASIER INSERTION



**78904**  
**Plug inflation hose**  
fi 6 mm, 2 m,  
0.2 kg, 0.4 lbs



**78905**  
**Plug inflation hose**  
fi 6 mm, 5 m,  
0.5 kg, 1.1 lbs



**60010**  
**Hand pump**  
0 - 6 bar



## PLUGY - BLOCKING PLUG

Part number	Type plugy EU	Size usage range		Required inflation pressure (bar)	Deflated plug		Product weight (kg)	Eye bolt	Inflation valve
		Min. dia. (mm)	Max. dia. (mm)		M thread	Thread size			
508123	Z1	20	33	2.5	19	65	0.01	NA	R 1/8"
60022	Z1 1/2	33	40	2.5	32	70	0.09	NA	R 1/4"
78582	Z2	50		2.5	45	72	0.11	NA	R 1/4"
78603	Z2-3	50	75	2.5	45	80	0.12	NA	R 1/4"
76767	Z3	75		2.5	70	85	0.23	NA	R 1/4"
78604	Z3-4	75	100	2.5	70	100	0.25	NA	R 1/4"
76769	Z4	100		2.5	85	145	0.43	NA	R 1/4"
78605	Z4-6	100	150	2.5	85	165	0.47	NA	R 1/4"
76771	Z6	150		2.5	142	190	1.23	NA	R 1/4"
78606	Z6-8	150	200	2.5	142	220	1.32	NA	R 1/4"
60616	Z8	175	204	2.5	174	220	2.1	6	R 1/4"
60618	Z10	219	254	2.5	218	250	3.4	6	R 1/4"
60619	Z12	275	305	2.5	274	290	5.1	6	R 1/4"

## PLUGSY - BYPASS PLUG

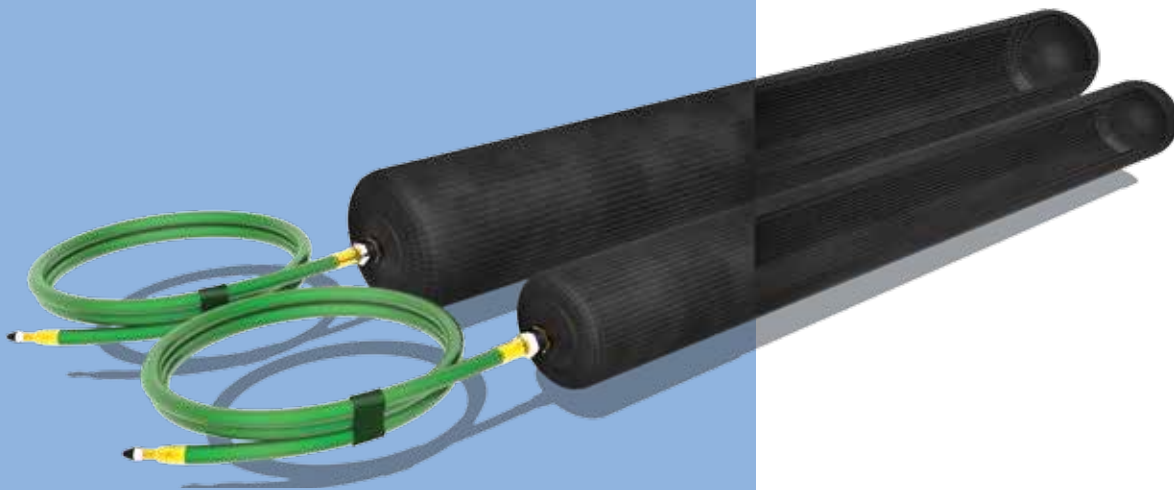
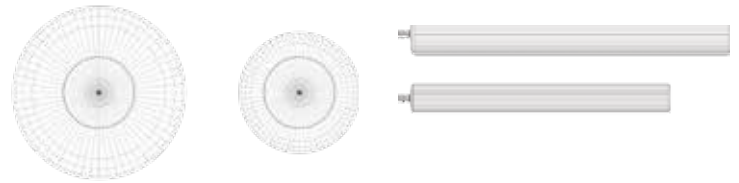
Part number	Type plugy EU	Size usage range		Required inflation pressure (bar)	Deflated plug		Product weight (kg)	Eye bolt	Inflation valve	Bypass diameter (female)
		Min. dia. (mm)	Max. dia. (mm)		M thread	Thread size				
78607	S2	50		2.5	45	80	0.2	NA	R 1/8"	1/8"
76768	S3	75		2.5	70	85	0.34	6	R 1/8"	1/2"
78614	S3-4	75	100	2.5	70	100	0.43	6	R 1/8"	1/2"
76770	S4	100		2.5	85	145	0.6	6	R 1/8"	1/2"
78609	S4-6	100	150	2.5	85	165	0.73	6	R 1/8"	1/2"
76772	S6	150		2.5	142	190	2.13	6	R 1/8"	1"
78610	S6-8	150	200	2.5	142	220	2.38	6	R 1/8"	1"
60621	S8	175	204	2.5	174	240	3.3	6	R 1/4"	2"
60622	S10	219	254	2.5	218	300	4.7	6	R 1/4"	2"
60623	S12	275	305	2.5	274	350	7.4	6	R 1/4"	2"

## BACK PRESSURE - PLUGY & PLUGSY (bar), measured in dry iron pipe

Plug size	Pipe diameter (mm)								
	25	40	50	75	100	150	200	250	300
1"	2.2								
1 1/2"		2.2							
2"			1.8						
2" - 3"			2	1.5					
3"				1.5					
3" - 4"				1.8	1.2				
4"					1.9				
4" - 6"					1.9	1.6			
6"						2.2			
6" - 8"						2.2	1.4		
8"							1.3		
10"								1.5	
12"									1.8

# MULTI-SIZE LONG PLUGS PLUGY DC

# 1.2

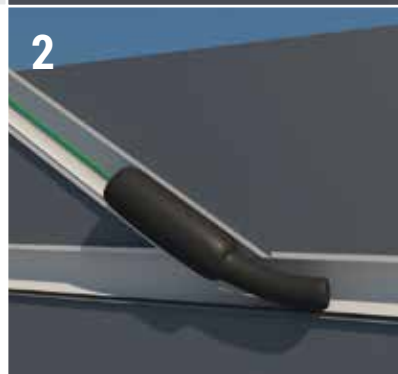
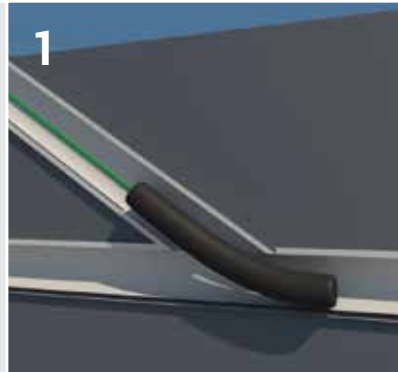


6

Savatech multi-size long plugs PLUGY DC construction enables easy insertion at angle through connections into a main pipe. Efficient sealing of both connection and a main pipe is guaranteed. Plugs are used for testing tightness of pipes with air or water. Savatech long plugs DC are equipped with a 100 cm long supply hose, a chain and a pear-shaped handle.

## HANDLING

- 1 Insert the plug in the middle of a connection.
- 2 In the first phase the upper plug part is inflated to prevent liquid spills.
- 3 In the second phase the remaining part of the plug is inflated to completely stop the flow.



## BLOCKING PLUG - PLUGY DC

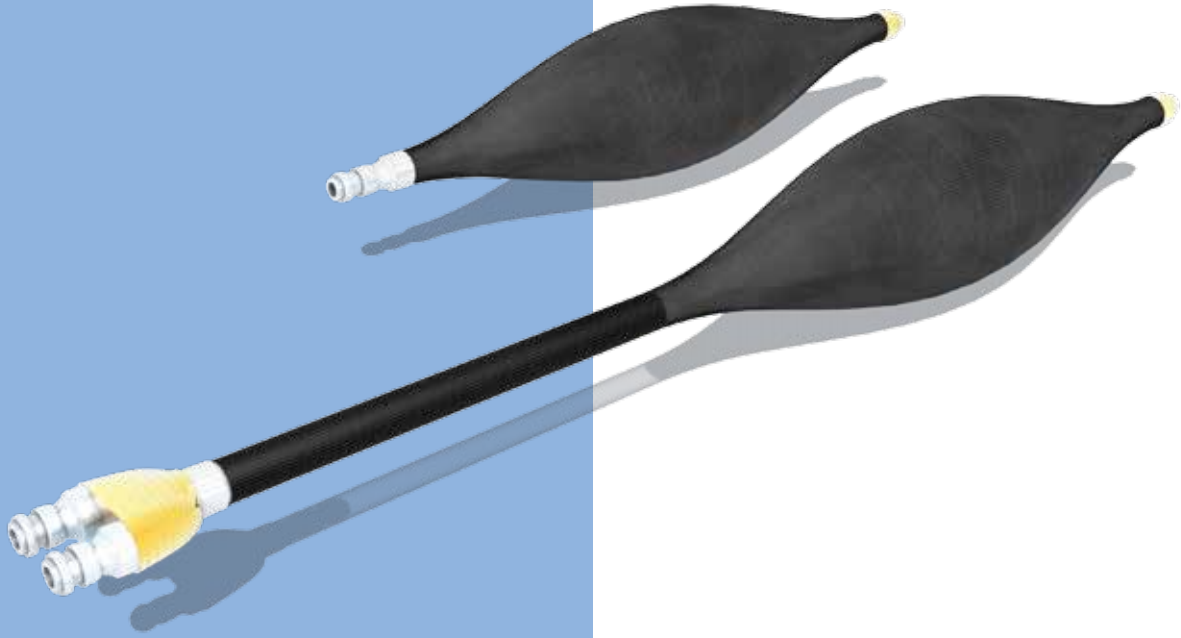
Part number	Nominal size EU	Size usage range		Required inflation pressure (bar)	Deflated plug		Product length (mm)	Product weight (kg)	Eye Bolt	
		Min. dia. (mm)	Max. dia. (mm)		Diameter (mm)	Body length (mm)			M thread	Inflation valve Thread size
60073	50-75	50	75	2.5	40	490	550	0.7	NA	TR 15
60074	75-100	75	100	2.5	60	550	610	1.2	NA	TR 15
60075	100-150	100	150	2.5	80	750	810	1.8	NA	TR 15
60076	150	150	150	2.5	100	730	790	2.6	NA	TR 15

## BACK PRESSURE (bar) - PLUGY, measured in dry iron pipe

Plug type	Pipe diameter (mm)			
	50	75	100	150
Plug				
50-75	2.2	2		
75-100		2.1	1.9	
100-150			2	1.8
150				1.9

# MULTI-SIZE PLUGS PLUGY G AND PLUGSY GM

## 1.3



Savatech multi-size plugs PLUGY G and PLUGSY GM are used for sealing and testing of pipelines and gas pipelines with a restricted inlet area. All metal parts are made of stainless and non-sparking materials. Innovative design and flexibility eases handling and insertion and provides high back pressure values and long service life.



**VERY SMALL  
INSERTION  
DIAMETER  
REQUIRED**

### PLUGY G - BLOCKING PLUG

Part number	Nominal size EU	Size usage range		Required inflation pressure (bar)	Max. allowed back pressure (bar)	Deflated plug		Diameter for insertion (mm)	Product weight (kg)	Inflation valve thread size
		Min. dia. (mm)	Max. dia. (mm)			Diameter (mm)	Length (mm)			
511807	50-80	45	80	3	1	45	280	35	0.29	R 1/4"
511808	80-130	75	130	2.5	1	76	360	40	0.37	R 1/4"
511809	100-160	100	160	2	1	98	420	45	0.56	R 3/8"
511810	150-210	145	210	2	1	140	510	50	0.78	R 3/8"
511811	200-315	200	315	2	1	200	730	70	1.25	R 3/8"
519420	315-500	315	500	1.5	0.8	315	950	90	1.45	R 3/8"

### PLUGSY GM - BYPASS PLUG

Part number	Nominal size EU	Size usage range		Required inflation pressure (bar)	Max. allowed back pressure (bar)	Deflated plug		Diameter for insertion (mm)	Product weight (kg)	Inflation valve thread size	Bypass diameter (female) (mm)
		Min. dia. (mm)	Max. dia. (mm)			Diameter (mm)	Length (mm)				
511812	50-80	45	80	3	1	45	490	35	0.71	R 1/4"	5
511813	80-130	75	130	2.5	1	76	570	40	0.79	R 1/4"	5
511814	100-160	100	160	2	1	98	645	45	1.01	R 3/8"	7
511815	150-210	145	210	2	1	140	760	50	1.22	R 3/8"	7
511816	200-315	200	315	2	1	200	1060	70	1.72	R 3/8"	7
519421	315-500	315	500	1.5	0.8	315	1280	90	1.9	R 3/8"	7

# HOUSE CONNECTION TEST SET

# 1.4



8

Savatech house connection test set is suitable for tightness test of house connections, piping and drains with water or air according to the DIN EN 1610 standard. It is simple to use and assures effective work from one inlet opening with a simultaneous inflation of both plugs. The distance between the testing plugs can vary quickly as connecting hoses are of different lengths. The product is noted for simple use, reliability and low air requirement.

### ADVANTAGES:

- Simultaneous inflation of both plugs.
- Small/short/compact bypass plugs with hoses of various colors.
- Bypass plug coupling inside the barrier.
- Extremely light and flexible sealing plug.
- Handy and simple venting floater.
- Extremely flexible push rods, length 10m.
- Small, compact, light-weight, impact resistant and weather proof carrying case.



**SIMULTANEOUS  
INFLATION  
OF BOTH PLUGS**



**SIMPLE HANDLING  
AND USAGE**



**HIGH QUALITY  
MATERIALS**

## HOUSE CONNECTION TEST SET - TECHNICAL DATA

Part number	Type	Size usage range		Required inflation pressure (bar)	Max. allowed back pressure (bar)	Size of deflated plug		Insertion opening (mm)	Product Weight (kg)
		Min. dia. (mm)	Max. dia. (mm)			Diameter (mm)	Length (mm)		
562158	Plugsy 100-150	100	150	2.5	0.2	80	160	100	1.5
564063	Plugy 100-150	100	150	2.5	1	98	420	100	0.6
562159	Plugsy 150-210	150	210	2.5	0.2	120	180	150	2.9
564064	Plugy 150-210	150	210	2.5	1	140	510	150	0.8





**567429**  
Con. element for testing with air



**562160**  
Carrying case - larger



**566529**  
Carrying case - smaller



**565089**  
Protection pipe for push rods



**547164**  
Push rod HC-Type  
21 KS, L=0.5 m



**547165**  
Push rod HC-Type  
21 KS, L=1 m



**547166**  
Push rod HC-Type  
21 KS, L=2 m



**562157**  
Holding rope  
fi 3 mm, 10 m



**563535**  
Venting floater



**564061**  
Spring hose connector



**562151**  
GEKA ball valve



**562150**  
3x GEKA T piece



**562152**  
Water measuring hose  
fi 13 mm, 5 m



**562153**  
Air inflation hose  
fi 8 mm, 3 m

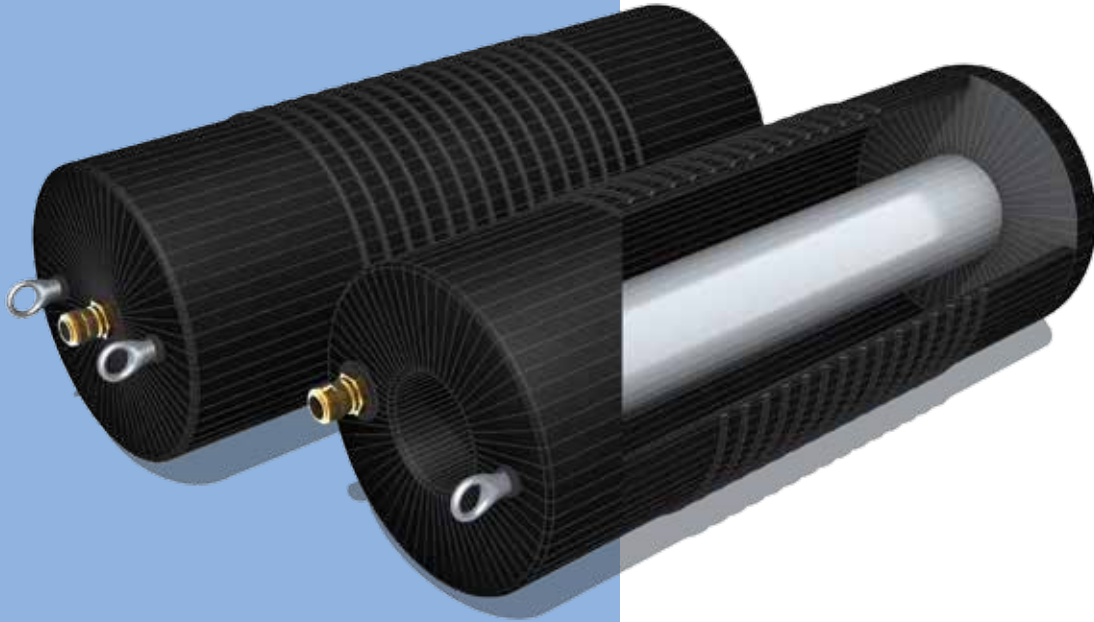
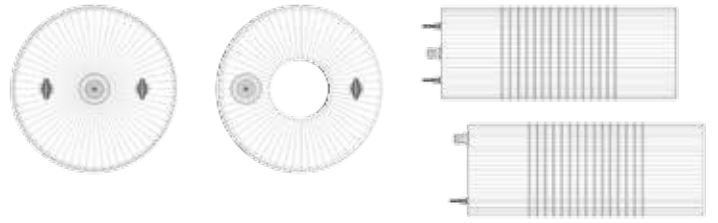


**563381**  
Controller  
2.5 bar



# MULTI-SIZE PLUGS FOR LARGER PIPELINE DIAMETERS PLUGY AND PLUGSY

## 1.5



10

Savatech multi-size plugs for larger pipeline diameters PLUGY and PLUGSY superior plug surface pattern, excellent choice of rubber compound, Rayon - Kevlar reinforcement, suitable length, low weight, excellent sealing abilities, anti-corrosive components, guarantees safe and easy usage.

All plugs are equipped with quick action couplings for inflation, larger sizes have two couplings installed. The size and number of eye bolts varies on plug size. Thanks to the flexibility of the plugs, they can be easily inserted through manholes of size 600 x 600 mm (up to 90°).



AVAILABLE IN USAGE RANGE FROM 40 mm UP TO 1800 mm



AVAILABLE IN OIL RESISTANT VERSION QUALITY



AIR AND WATER TIGHTNESS TEST ACCORDING TO EN1610 POSSIBLE

**60958**  
Polly lift hose 10 m,  
1.85 kg, 4.07 lbs



**60450**  
Adapter for air testing R2,  
0.60 kg, 1.32 lbs



**60449**  
Adapter for air testing R1,  
0.50 kg, 1.10 lbs



**60310**  
Single controller with pressure gauge, relief and ball valve;  
2.5 bar, 0.90 kg, 1.98 lbs



**71248**  
Plug inflation hose with quick coupling and nipple, fi 8 mm, 10 m, blue,  
1.20 kg, 2.65 lbs



## PLUGY - BLOCKING PLUG

Part number	Nominal size EU	Size usage range		Required inflation pressure (bar)	Deflated plug		Product weight (kg)	Eye bolt		Inflation valve
		Min. dia. (mm)	Max. dia. (mm)		Diameter (mm)	Rubber length (mm)		M thread	Thread size	
519423	40-70	40	70	2.5	35	160	0.2	NA	R 1/4"	
519424	70-150	70	150	2.5	68	300	0.4	NA	R 1/4"	
60417	100-200	100	200	2.5	92	500	1.35	M6	R 1/4"	
526850	150-200	150	200	2.5	142	350	1.85	M8	R 1/4"	
60418	150-300	150	300	2.5	142	540	2.6	M8	R 1/4"	
60419	200-400	200	400	2.5	192	600	3.6	M8	R 1/4"	
60599	300-525	300	525	2.5	272	630	6.8	M8	R 1/4"	
60422	350-600	350	600	2.5	322	830	9.8	M10	R 1/4"	
60606	375-750	375	750	2.5	342	1050	11.9	M10	R 1/4"	
60453	500-800	500	800	2.5	472	1150	19.5	M10	R 1/4"	
60425	500-1000	500	1000	1.5	472	1150	19.5	M10	R 1/4"	
523941	600-1200	600	1200	1.5	574	1450	38	M10	2 x R 3/8"	
78959	750-1500	750	1500	1	600	2300	75	M10	2 x R 1/4"	
535881	800-1800	800	1800	1	600	3000	106	M10	2 x R 1/4"	

## PLUGSY - BYPASS PLUG

Part number	Nominal size EU	Size usage range		Required inflation pressure (bar)	Deflated plug		Product weight (kg)	Eye bolt		Inflation valve	Bypass diameter (female)
		Min. dia. (mm)	Max. dia. (mm)		Diameter (mm)	Rubber length (mm)		M thread	Thread size		
526849	70-150	70	150	2.5	68	300	1.7	NA	R 1/4"	1/2"	
60429	100-200	100	200	2.5	92	500	2.7	M6	R 1/4"	1"	
526851	150-200	150	200	2.5	142	350	3.3	M8	R 1/4"	1"	
60432	150-300	150	300	2.5	142	540	4.3	M8	R 1/4"	1"	
60434	200-400	200	400	2.5	192	600	7	M8	R 1/4"	2"	
60630	300-525	300	525	2.5	272	630	12	M8	R 1/4"	2"	
60440	350-600	350	600	2.5	322	830	16	M10	R 1/4"	2"	
60632	375-750	375	750	2.5	342	1050	19.7	M10	R 1/4"	2"	
60454	500-800	500	800	2.5	472	1150	32.5	M10	R 1/4"	2"	
60442	500-1000	500	1000	1.5	472	1150	32.5	M10	R 1/4"	2"	
523942	600-1200	600	1200	1.5	574	1450	55.5	M10	2 x R 3/8"	4"/6"/8"	
78960	750-1500	750	1500	1	600	2300	91	M10	2 x R 1/2"	4"/6"/8"	
535882	800-1800	800	1800	1	600	3000	117	M10	2 x R 1/2"	4"/6"/8"	

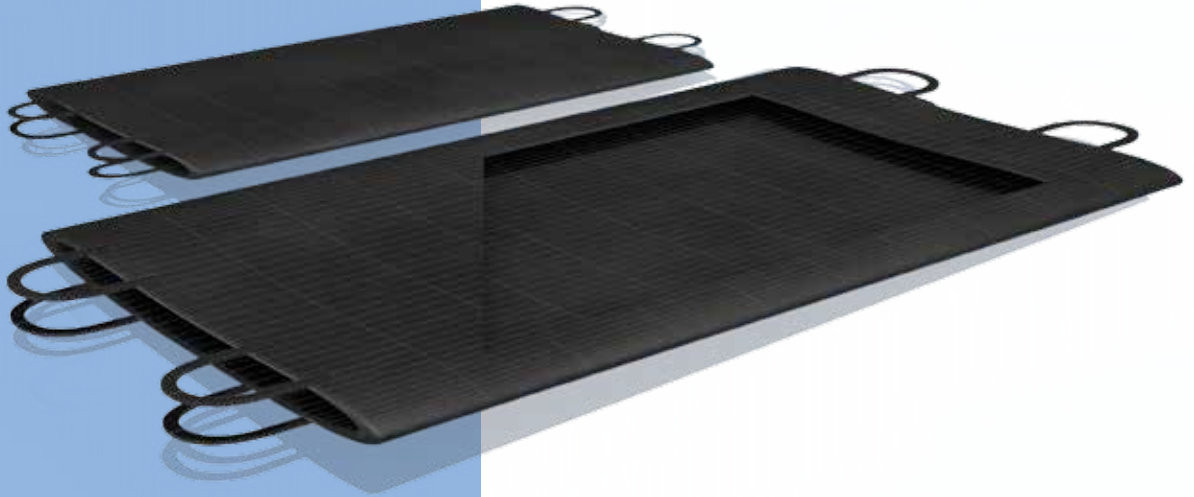
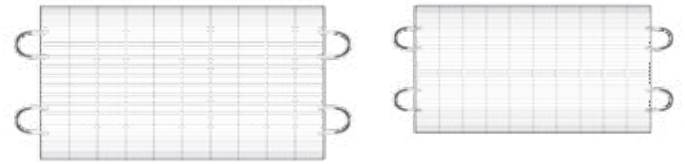
Note: The Part numbers are for plugs 4"

## BACK PRESSURE - measured in dry iron pipe (bar) - PLUGY, PLUGSY

PLUG TYPE	Pipe Diameter (mm)																				
	40	70	100	150	200	250	300	350	400	500	600	800	1000	1200	1300	1400	1500	1600	1700	1800	
40-70	2	1.2																			
70-150		2.2	1.7	1.3																	
100-200			2.2	1.7	1.3																
150-200				2	1.5																
150-300				2.2	2	1.4	1.2														
200-400					2.2	2	1.7	1.5	1.2												
300-525							2	1.7	1.5	1.2											
350-600								2.1	1.9	1.6	1.3										
375-750									2	1.7	1.4										
500-800										1.8	1.4	1.1									
500-1000										1	0.8	0.6	0.5								
600-1200											1	0.7	0.6	0.5							
750-1500												1	0.9	0.8	0.7	0.6	0.5				
800-1800													1	1	0.9	0.8	0.7	0.6	0.5	0.5	0.4

# PROTECTIVE SLEEVES

# 1.6



Savatech protective sleeves prevent superficial cuts on the plug surface and reduce the possibility of plug damage due to sharp objects or debris from damaged pipes. They do not affect the performance of back pressure values of the plugs. They extend service life of a plug and are especially suitable for frequent users such as rental operations. Comply with our standard plug sizes. Handles on both sides facilitate pulling the sleeve over the plug.



ADDITIONAL PLUG DAMAGE PROTECTION



AVAILABLE IN DIFFERENT SIZES



ALSO AVAILABLE IN OIL RESISTANT QUALITY



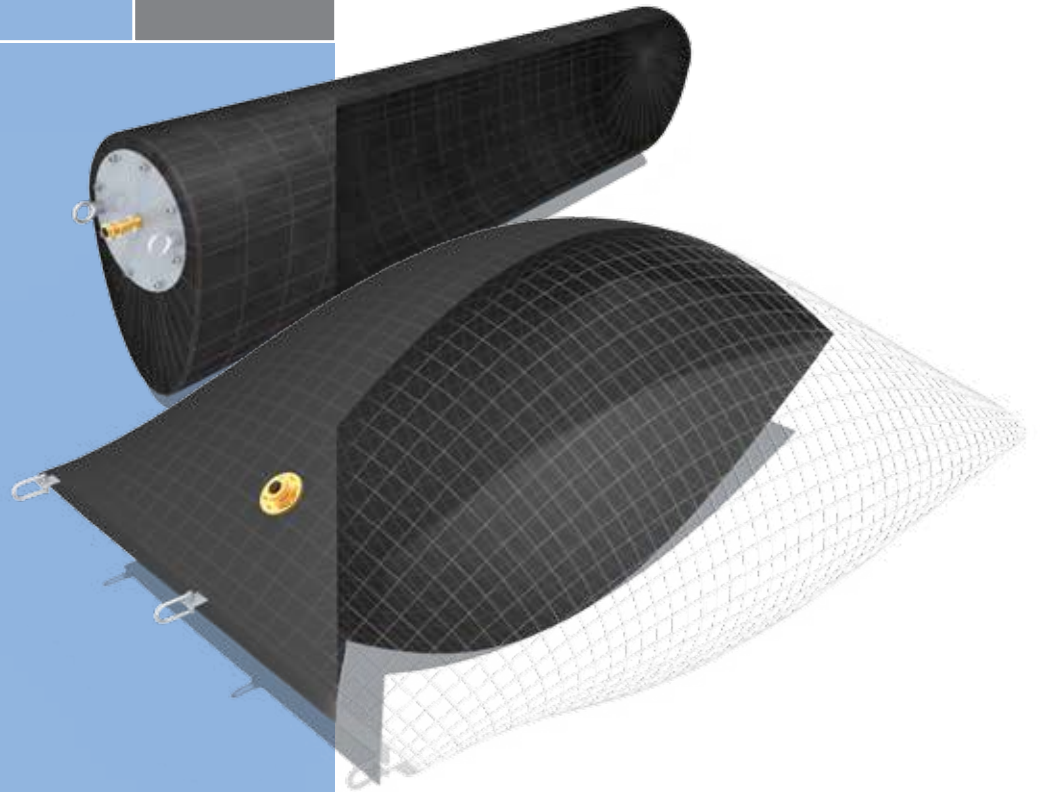
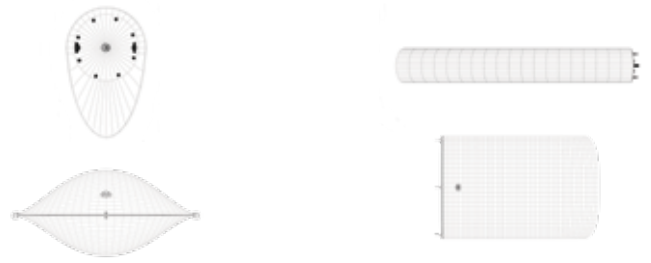
COMPLY WITH STANDARD PLUG SIZES

## PROTECTIVE SLEEVES

Part number	Size usage range		Length (mm)	Thickness (mm)	Product weight (kg)
	Min. dia. (mm)	Max. dia. (mm)			
531489	100	200	400	2	0.3
525342	150	300	500	3	1
515570	200	400	600	4	1.6
536435	300	525	620	4	2.8
510395	350	600	800	4	3.5
510396	375	750	1000	4	4.6
510397	500	1000	1100	4	5.5
527496	600	1200	1300	6	16.9
510399	750	1500	2100	6	24.5
535884	800	1800	2300	6	29.7
565770	1000	2400	3500	8	108

# MULTI-SIZE EGG SHAPE PLUGS PLUGY AND PLUGSY EI

## 1.7



The shape of first two sizes is adjusted to the shape of a pipeline, while the larger sizes are pillow-shaped to simplify insertion through manholes. Plugs are available in seven standard sizes, both sealing and by-pass types.



**CUSTOM MADE  
DIMENSIONS  
AVAILABLE**

### PLUGY EI - BLOCKING PLUG

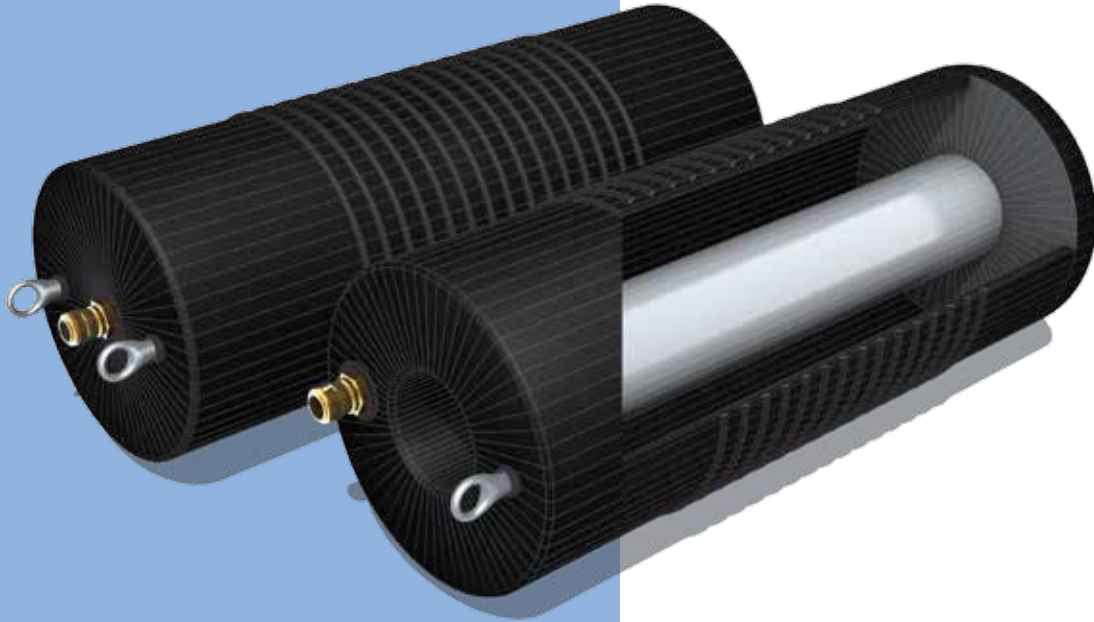
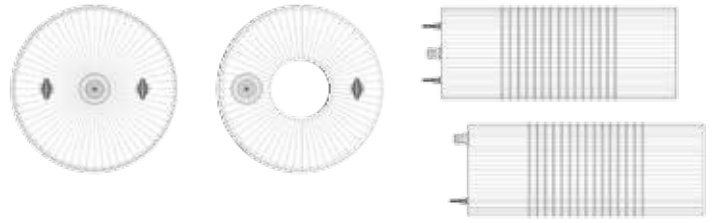
Part number	Nominal size EU	Size usage range		Required inflation pressure (bar)	Max. allowed back pressure		Deflated plug			Product weight (kg)	Eye bolt	Shackles x piece	Inflation valve
		Min. dia. (mm)	Max. dia. (mm)		Water head (bar)	Water head (m)	Diameter (mm)	Width (mm)	Length (mm)		M thread	M thread	
503485	EI 1	200/300	250/375	1.5	0.5	5	180x265	/	600	7	8	NA	TYPE 26
503486	EI 2	300/450	350/525	1.5	0.5	5	280x415	/	700	14.8	8	NA	TYPE 26
526694	EI 3 - PILLOW	400/600	500/750	1.3	0.5	5	420	660	1800	20.1	NA	12 x 2	2 x R1/2"
568807	EI 3s - PILLOW	600/900	600/900	1.3	0.5	5	636	1000	1800	26.7	NA	12 x 2	2 x R1/2"
519444	EI 4 - PILLOW	700/1050	800/1200	0.9	0.5	5	751	1180	2300	36.1	NA	12 x 2	2 x R1/2"
519447	EI 5 - PILLOW	900/1350	1000/1500	0.8	0.5	5	955	1500	2900	53.9	NA	12 x 3	2 x R1/2"
536345	EI 6 - PILLOW	1200/1800	1400/2100	0.6	0.4	4	1394	2190	3400	92.4	NA	12 x 3	2 x R1/2"

### PLUGY EI - BYPASS PLUG

Part number	Nominal size EU	Size usage range		Required inflation pressure (bar)	Max. allowed back pressure		Deflated plug			Product weight (kg)	Eye bolt	Shackles x piece	Inflation valve
		Min. dia. (mm)	Max. dia. (mm)		Water head (bar)	Water head (m)	Diameter (mm)	Width (mm)	Length (mm)		M thread	M thread	
504158	EI 1	200/300	250/375	1.5	0.5	5	180x265	/	600	10.2	8	NA	2"
504160	EI 2	300/450	350/525	1.5	0.5	5	280x415	/	700	17.9	8	NA	3"
526695	EI 3 - PILLOW	400/600	500/750	1.3	0.5	5	420	660	1800	25.4	NA	12 x 2	2"
568808	EI 3s - PILLOW	600/900	600/900	1.3	0.5	5	636	1000	1800	32.1	NA	12 x 2	2"
519448	EI 4 - PILLOW	700/1050	800/1200	0.9	0.5	5	751	1180	2300	42.1	NA	12 x 2	2"
519449	EI 5 - PILLOW	900/1350	1000/1500	0.8	0.5	5	955	1500	2900	60.8	NA	12 x 3	2"
536350	EI 6 - PILLOW	1200/1800	1400/2100	0.6	0.4	4	1394	2190	3400	100.9	NA	12 x 3	2"

# HIGH PERFORMANCE PLUGS PLUGY AND PLUGSY HPF

## 1.8



14

Savatech high performance plugs PLUGY and PLUGSY HPF with high quality rubber mixture and additional Kevlar reinforcement built-in ensure reliable functioning in all conditions.

Savatech HPF Plugs are built for heavy duty use and more demanding working conditions.

The family of these plugs is ideal for flow stopping and pipe tightness testing.

Larger choice of bypass flows (4", 6", 8") is also available.



ALSO AVAILABLE  
AS OIL RESISTANT  
QUALITY



USAGE RANGE  
100 mm - 2400 mm



HIGHER BACK  
PRESSURES

**60958**

**Polly lift hose 10 m,**

1.85 kg, 4.07 lbs



**60310**

**Single controller with  
pressure gauge, relief  
and ball valve;**

2.5 bar, 0.90 kg, 1.98 lbs



## ACCESSORIES

Part number	
547645	Single fitting controller, 3,0bar (type 27)
547646	Single fitting controller, 2,5bar (type 57)
547647	Single fitting controller, 1,5bar (type 57)
547650	Single fitting controller, 1,0bar (type 57)
547714	Inflation hose HP NW10, 10m, blue (type 27)
547715	Inflation hose HP NW12, 10m, blue (type 57)

## PLUGY - BLOCKING PLUG

Part number	Nominal size EU	Size usage range		Required inflation pressure (bar)	Deflated plug		Product weight (kg)	Eye bolt	Inflation valve
		Min. dia. (mm)	Max. dia. (mm)		Diameter (mm)	Rubber length (mm)		M thread	Thread size
545456	100-200	100	200	3	92	500	1.2	M6	R 1/4"
545457	150-300	150	300	3	142	540	2.3	M12	R 1/2"
545458	200-400	200	400	3	192	600	3.8	M12	R 1/2"
545460	350-600	350	600	3	322	830	8.9	M12	R 1/2"
545463	500-800	500	800	3	472	1150	23	M12	R 1/2"
545464	500-1000	500	1000	3	472	1150	23	M12	R 1/2"
545465	600-1200	600	1200	2.5	574	1500	39.1	M16	R 1/2"
545467	750-1500	750	1500	1.5	600	2300	78.7	M16	R 1/2"
545783	800-1800	800	1800	1.5	600	3000	105.1	M16	R 1/2"
545785	1000-2400	1000	2400	1	960	4000	313.7	M16	R 1/2"

## PLUGSY - BYPASS PLUG

Part number	Nominal size EU	Size usage range		Required inflation pressure (bar)	Deflated plug		Product weight (kg)	Eye bolt	Inflation valve thread size	Bypass diameter
		Min. dia. (mm)	Max. dia. (mm)		Diameter (mm)	Rubber length (mm)		M thread		
545468	100-200	100	200	3	92	500	2.6	M6	R 1/4"	1"
545469	150-300	150	300	3	142	540	3.9	M8	R 1/4"	1"
545470	200-400	200	400	3	192	600	6.8	M12	R 3/8"	2"
545472	350-600	350	600	3	322	830	14.8	M12	R 3/8"	2"
545473	500-800	500	800	3	472	1150	31	M12	R 3/8"	2"
545474	500-1000	500	1000	3	472	1150	31	M12	R 3/8"	2"
545475	600-1200	600	1200	2.5	574	1500	54.3	M16	R 1/2"	4"/6"/8"
545476	750-1500	750	1500	1.5	600	2300	94.8	M16	R 1/2"	4"/6"/8"
545784	800-1800	800	1800	1.5	600	3000	125.6	M16	R 1/2"	4"/6"/8"
545787	1000-2400	1000	2400	1	960	4000	341	M16	R 1/2"	4"/6"/8"

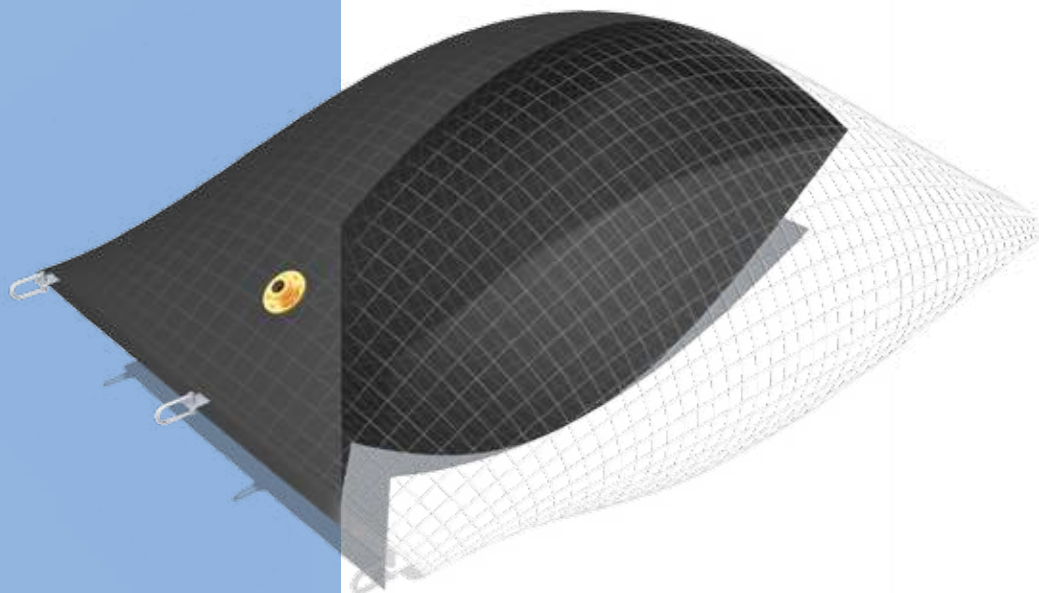
Note: The Part numbers are for plugs 4"

## PLUGY, PLUGSY - BACK PRESSURE (bar), measured in dry iron pipe

Plug type	Pipe diameter (mm)																				
	100	150	200	250	300	350	400	500	600	800	1000	1200	1300	1400	1500	1600	1700	1800	2000	2200	2400
100 - 200 3 bar	2.6	2.1	1.7																		
150 - 300 3 bar		2.6	2.4	1.8	1.6																
200 - 400 3 bar			2.6	2.4	2.1	1.9	1.6														
350 - 600 3 bar						2.6	2.5	2	1.7												
500 - 800 3 bar								2.6	2.5	1.7											
500 - 1000 3 bar								2.6	2.5	1.7	1										
600 - 1200 2.5 bar									2.1	1.9	1.5	1									
750 - 1500 1.5 bar										1.2	1.1	1	0.9	0.8	0.7						
800 - 1800 1.5 bar										1.3	1.2	1.1	1	0.9	0.8	0.7	0.6	0.5			
1000 - 2400 1.0 bar											0.9	0.9	0.9	0.9	0.8	0.8	0.7	0.7	0.6	0.5	0.5

# MULTI-SIZE PILLOW-TYPE PLUGS PLUGY AND PLUGSY

## 1.9



Savatech multi-size pillow-type plugs PLUGY and PLUGSY unique construction and high-quality materials reflects in low weight and high flexibility light and flexible during usage and storage. The plugs of this type are used for blocking water flow in pipelines and sewage systems as well as for air-tightness tests.

A flexible 2" hose, which is easily replaced, is built in a by-pass plug.



VERY SMALL  
INSERTION  
DIAMETER  
REQUIRED



CUSTOM MADE  
DIMENSIONS  
AVAILABLE



APPLICABLE IN  
ROUND AND OVAL  
ELLIPTICAL  
PIPELINES



**519817**  
**Plug inflation hose with  
GEKA coupling**  
fi 19 mm, 10 m, yellow,  
3 kg, 6.6 lbs



**504061**  
**Double controller with  
pressure gauge,  
relief and ball valve,**  
1bar, 2 kg, 4.4 lbs



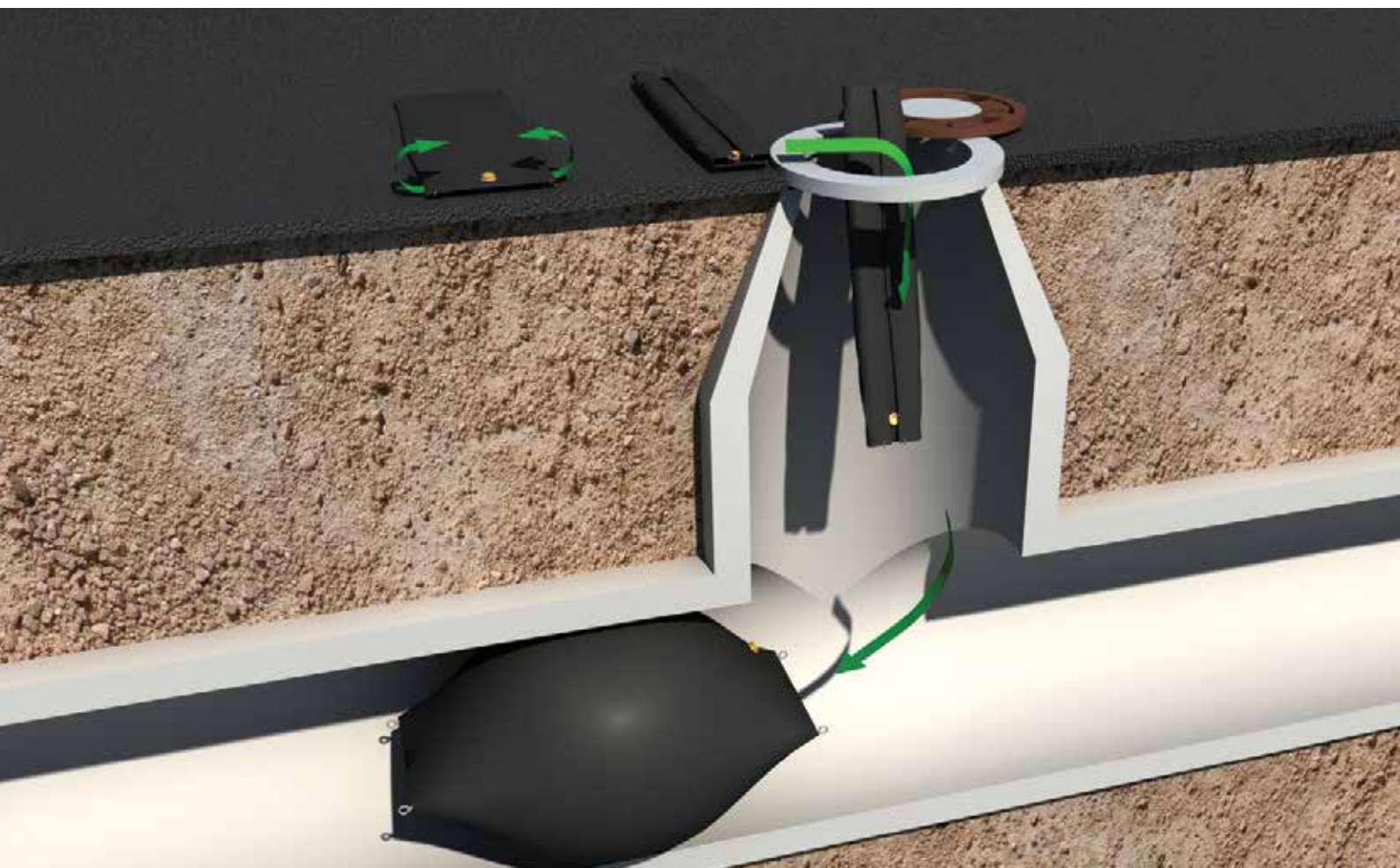


## PLUGY PILOW - BLOCKING PLUG

Part number	Nominal size EU	Size usage range		Required inflation pressure (bar)	Max. allowable back pressure		Deflated plug			Product weight (kg)	Eye bolt	Inflation valve
		Min. dia. (mm)	Max. dia. (mm)		Water head (bar)	Water head (m)	Diameter (mm)	Width (mm)	Length (mm)		M thread	
529411	600-1000	600	1000	1	0.7	7	580	910	2100	18	12 x 2	2 x R1/2"
529412	800-1200	800	1200	0.9	0.6	6	780	1230	2500	29	12 x 2	2 x R1/2"
529413	1200-1600	1200	1600	0.8	0.5	5	1170	1830	3200	51	12 x 3	2 x R1/2"
529414	1600-2000	1600	2000	0.6	0.4	4	1560	2450	4000	86	12 x 3	2 x R1/2"
529491	1900-2200	1900	2200	0.5	0.3	3	1850	2910	4800	100	12 x 4	2 x R1/2"
545429	2400-2500	2400	2500	0.5	0.3	3	2350	3690	5600	222	12 x 6	2 x R1/2"
545430	2600-2700	2600	2700	0.4	0.2	2	2550	4000	6500	288	12 x 6	2 x R1/2"
545431	2800-2900	2800	2900	0.3	0.1	1	2740	4300	7000	332	12 x 6	2 x R1/2"
545432	3000	3000	3000	0,3	0,1	1	2930	4600	7500	377	12 x 6	2 x R1/2"

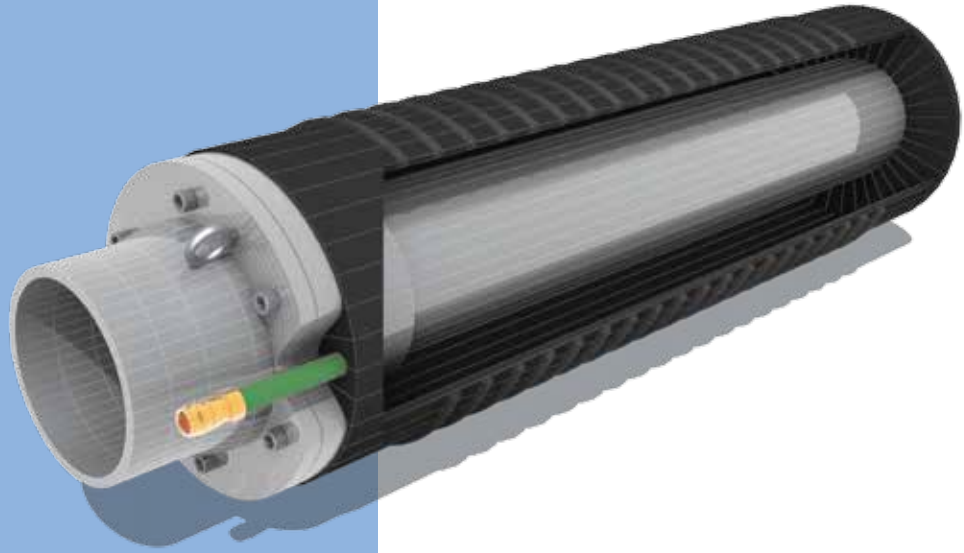
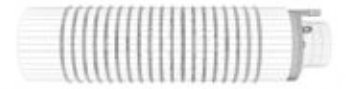
## PLUGY PILOW - BYPASS PLUG

Part number	Nominal size EU	Size usage range		Required inflation pressure (bar)	Max. allowable back pressure		Deflated plug			Product weight (kg)	Eye bolt	Inflation valve	Bypass diameter (female)
		Min. dia. (mm)	Max. dia. (mm)		Water head (bar)	Water head (m)	Diameter (mm)	Width (mm)	Length (mm)		M thread		
529415	600-1000	600	1000	1	0.7	7	580	910	2100	23	12 x 2	2 x R1/2"	2"
529416	800-1200	800	1200	0.9	0.6	6	780	1230	2500	34	12 x 2	2 x R1/2"	2"
529417	1200-1600	1200	1600	0.8	0.5	5	1170	1830	3200	57	12 x 3	2 x R1/2"	2"
529418	1600-2000	1600	2000	0.6	0.4	4	1560	2450	4000	92	12 x 3	2 x R1/2"	2"
529492	1900-2200	1900	2200	0.5	0.3	3	1850	2910	4800	100	12 x 4	2 x R1/2"	2"
545433	2400-2500	2400	2500	0.5	0.3	3	2350	3690	5600	234	12 x 6	2 x R1/2"	2"
545434	2600-2700	2600	2700	0.4	0.2	2	2550	4000	6500	301	12 x 6	2 x R1/2"	2"
545435	2800-2900	2800	2900	0.3	0.1	1	2740	4300	7000	346	12 x 6	2 x R1/2"	2"
545436	3000	3000	3000	0.3	0.1	1	2930	4600	7500	392	12 x 6	2 x R1/2"	2"



MULTI-SIZE  
PLUGS WITH  
LARGER BYPASS  
PLUGSY VP

1.10



Savatech multi-size plugs with larger bypass PLUGSY VP cover range from 100 mm up to 1800 mm. The replaceable rubber sleeve is reinforced with Kevlar cord and assure safe and simple handling. The by-pass is made of PHP hose and equipped with a threaded aluminium flange on the front side, which is easily replaceable to adjust the flow to actual requirements.

Use of plugs for testing tightness with air or water is also possible.



BYPASS DIAMETER  
UP TO 8 INCHES



REPLACABLE  
RUBBER  
SLEEVE AND  
BYPASS FLANGE



NON CORRODIVE  
METAL PARTS



## PLUGSY VP - BYPASS PLUG

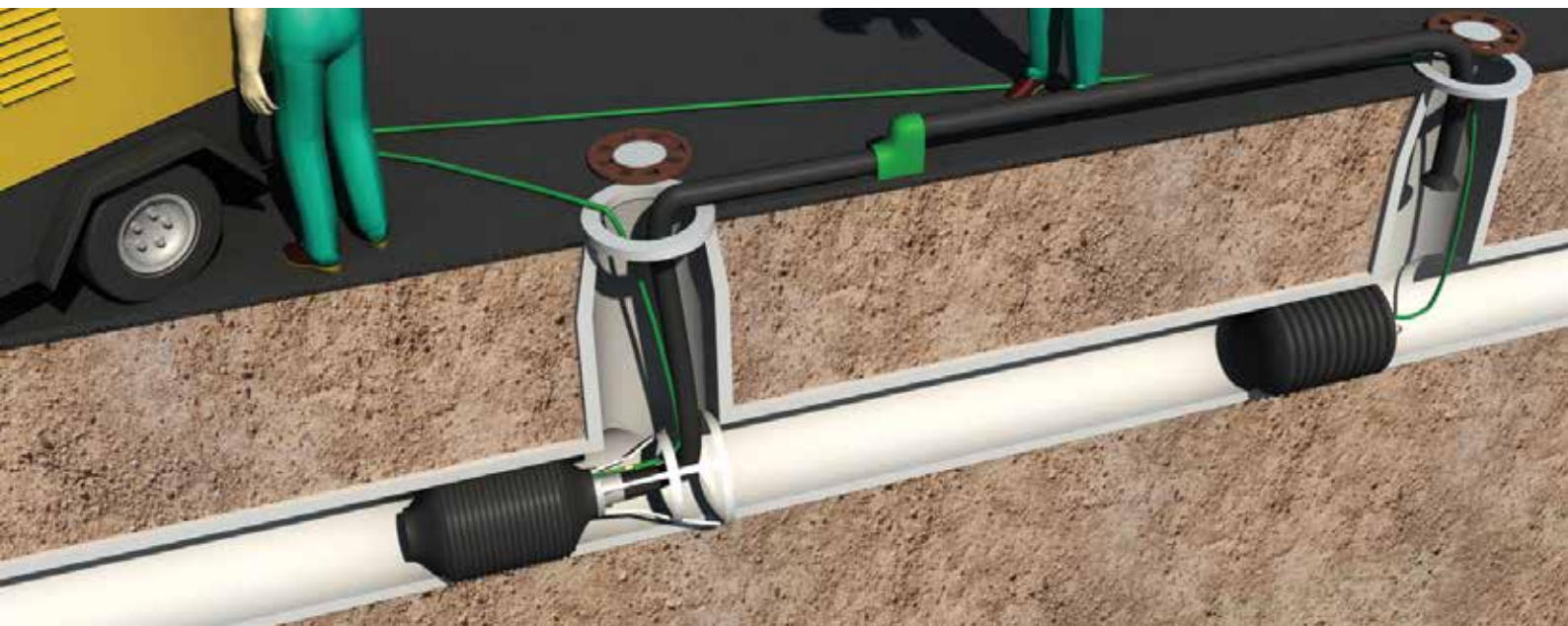
Part number	Nominal size EU	Size usage range		Required inflation pressure (bar)	Deflated plug		Product weight (kg)	Eye bolt	Inflation valve	Bypass diameter (female)
		Min. dia. (mm)	Max. dia. (mm)		M thread	Thread size				
516942	100-150	98	150	2.5	88	370	2.2	M 6	Not removable	2"
516943	150-250	148	250	2	136	520	4.6	M 6	Not removable	3" (2")
516944	200-300	198	300	2	186	550	7.6	M 6	Not removable	4" (2")
60967	150-300	150	300	1.5	142	540	3.6	M 8	-	2"
60968	200-400	200	400	1.5	192	600	6.1	M 8	-	4" (2")
533539	300-525	300	525	1.5	272	630	11.7	M 10	R 1/4"	6" (4", 2")
60970	350-600	350	600	1.5	322	830	17	M 10	R 1/4"	6" (4", 2")
60971	500-1000	500	1000	1.5	472	1150	37.5	M 10	R 1/4"	8" (6", 4", 2")
535873	600-1200	600	1200	1.5	574	1450	65.1	M 12	2 x R 3/8"	6"
535874	600-1200	600	1200	1.5	574	1450	70.5	M 12	2 x R 3/8"	8"
535876	750-1500	750	1500	1	600	2300	79	M 12	2 x R 1/2"	6"
535878	750-1500	750	1500	1	600	2300	83	M 12	2 x R 1/2"	8"
535879	800-1800	800	1800	1	800	3000	121	M 12	2 x R 1/2"	6"
535880	800-1800	800	1800	1	800	3000	125	M 12	2 x R 1/2"	8"

## BACK PRESSURE - measured in dry iron pipe (bar)

PLUG's size	Pipe Diameter (mm)												
	100	150	200	250	300	350	400	500	600	700	800	900	1000
100-150	1	0.8											
150-250		1	0.8	0.6									
200-300			1	0.8	0.6								
150-300		1	0.8	0.7	0.6								
200-400			1.1	0.9	0.7	0.6	0.6						
300-525					1	0.9	0.7	0.5					
350-600						0.9	0.8	0.7	0.6				
500-1000								1.1	0.9	0.8	0.7	0.6	0.6

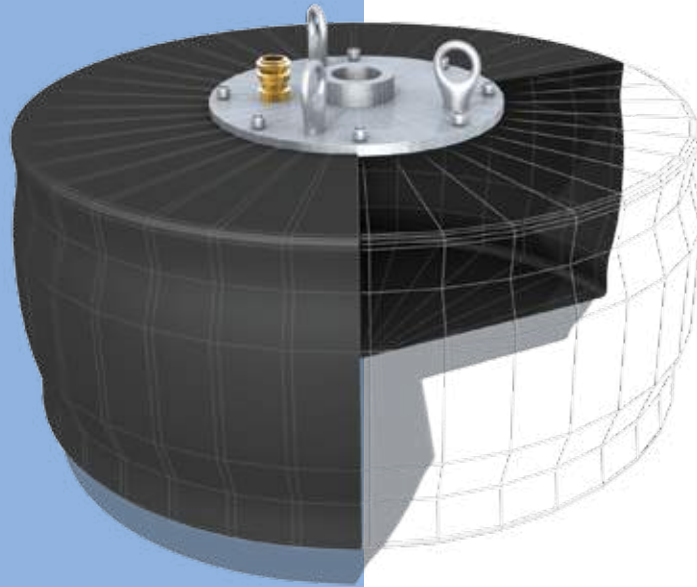
## BACK PRESSURE - measured in dry iron pipe (bar)

PLUG's size	Pipe Diameter (mm)									
	600	800	1000	1200	1300	1400	1500	1600	1700	1800
600-1200	1	0.8	0.6	0.5						
750-1500		1	0.9	0.7	0.6	0.5	0.4			
800-1800		1	1	0.8	0.8	0.7	0.6	0.5	0.4	0.4



# PLUGS FOR GULLY / MANHOLES TESTING PLUGSY VJ

## 1.11



20

Savatech plugs for gully/manholes testing PLUGSY VJ are short and light, equipped with three eyebolts for simple vertical positioning of a plug during insertion.



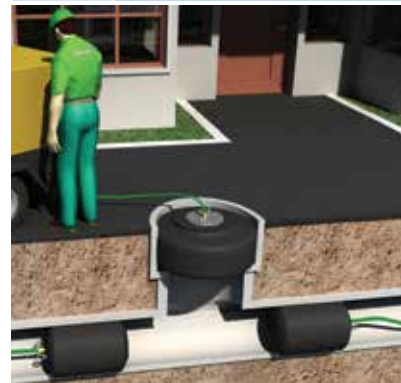
SIMPLE  
HANDLING



STANDARD  
ACCESSORIES  
AVAILABLE FOR  
TESTING WITH  
AIR ACCORDING TO  
EN1610

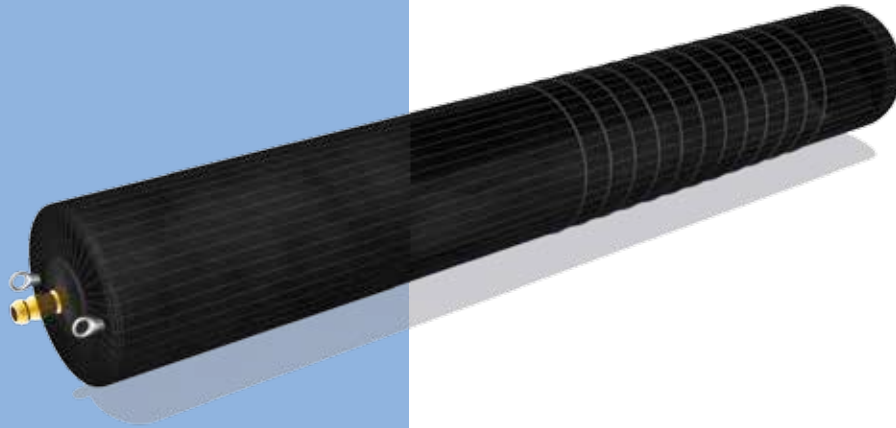
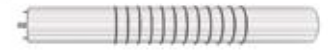
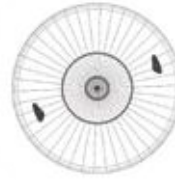
### PLUGSY VJ - BYPASS PLUG

Type plugsy	Part number	Nominal size EU	Size usage range		Required inflation pressure (bar)	Deflated plug		Product weight (kg)	Infla- tion valve	Bypass diameter
			Min. dia. (mm)	Max. dia. (mm)		Diameter (mm)	Length (mm)			
<b>VJ 600-650</b>	501841	600-650	600	650	1.5	560	360	16	R 1/4"	R 2"
<b>VJ 600</b>	538201	600	590	600	0.5	582	200	3.7	R 1/4"	R 2"
<b>VJ 800</b>	535889	800	780	800	0.5	770	200	5	R 1/4"	R 2"
<b>VJ 1000</b>	535890	1000	980	1000	0.5	970	200	6.5	R 1/4"	R 2"



# MULTI-SIZE HIGH-PRESSURE PLUGS PLUGY HP 6 AND 12 BAR

## 1.12



Savatech multi-size high-pressure plugs PLUGY HP 6 and 12 bar special reinforcements on the top and bottom of plugs as well as a double layer of cord fabric assure maximum safety at higher pressures. All plugs are equipped with eyelet bolts as well as with quick action couplings for inflation and deflation.



**SPECIAL  
REINFORCEMENT  
ALLOWS HIGH  
BACK PRESSURES**

21

### PLUGY HP 6 bar - BLOCKING PLUG

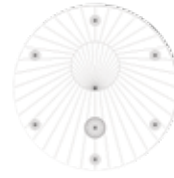
Part number	Nominal size EU	Size usage range		Required inflation pressure (bar)	Max. allowed back pressure (bar)	Deflated plug		Product weight (kg)	Eye bolt M thread	Inflation valve thread size
		Min. dia. (mm)	Max. dia. (mm)			Diameter (mm)	Length (mm)			
60887	100-150	100	150	6	3	92	535	1.2	6	R 1/4"
60907	150-200	150	200	6	3	142	575	2	8	R 1/4"
60908	200-300	200	300	6	3	192	635	3.2	8	R 1/4"
60909	350-500	350	500	6	3	322	865	8.7	8	R 1/4"
60924	500-600	500	600	6	3	472	1185	18	10	R 1/4"

### PLUGY HP 12 bar - BLOCKING PLUG

Part number	Nominal size EU	Size usage range		Required inflation pressure (bar)	Max. allowed back pressure (bar)	Deflated plug		Product weight (kg)	Eye bolt M thread	Inflation valve thread size
		Min. dia. (mm)	Max. dia. (mm)			Diameter (mm)	Length (mm)			
518561	100-125	100	125	12	10	92	540	1.5	6	R 1/4"
518562	150	150	150	12	10	142	580	2.7	8	R 1/4"
518563	200-250	200	250	12	10	192	640	4.3	8	R 1/4"
518564	300-350	300	350	12	10	272	670	8	8	R 1/4"
518565	400	400	400	12	10	322	870	11.5	10	R 1/4"
518566	500	500	500	12	10	472	1190	24.1	10	R 1/4"

# MULTI-SIZE HIGH-PRESSURE PLUGS AND PLUGGY HP 30 BAR

# 1.13



Market demands lead Savatech to design different sizes of high pressure inflatable plugs. Plugs are used for sealing of pipes with extremely high back pressures.



ALL METAL PARTS  
FROM STAINLESS  
STEEL

## PLUGY HP 30 BAR - BLOCKING PLUG

Part number	Nominal size EU	Size Usage Range		Required inflation pressure (bar)	Max. allowed back pressure (bar)	Length (mm)	Rubber sleeve length (mm)	Product weight (kg)
		Min. dia. (mm)	Max. dia. (mm)					
538625	Ø 54x400	55	75	30	16	615	400	3
533837	Ø 73x400	75	100	30	16	600	400	5
533838	Ø 88x400	100	150	30	16	614	400	6.7
533839	Ø 122x400	150	200	30	16	621	400	13

## PLUGSY HP 30 BAR - BYPASS PLUG

Part number	Nominal size EU	Size usage range		Required inflation pressure (bar)	Max. allowed back pressure (bar)	Flow through (mm)	Bypass thread ["]	Rubber sleeve length (mm)	Product weight (kg)
		Min. dia. (mm)	Max. dia. (mm)						
537553	Ø 54x400	55	75	30	16	10	3/8	400	3
537661	Ø 73x400	75	100	30	16	15	1/2	400	4.8
537323	Ø 88x400	100	150	30	16	20	3/4	400	7
537672	Ø 122x400	150	200	30	16	25	1	400	13

# PNEUMATIC PIPE REHABILITATION PACKERS

# 2

Savatech pneumatic pipe packers are suitable for repair of damaged pipeline sections and joints. In combination with resins and reinforcement materials they assure tightness on proper static strength of a pipeline.

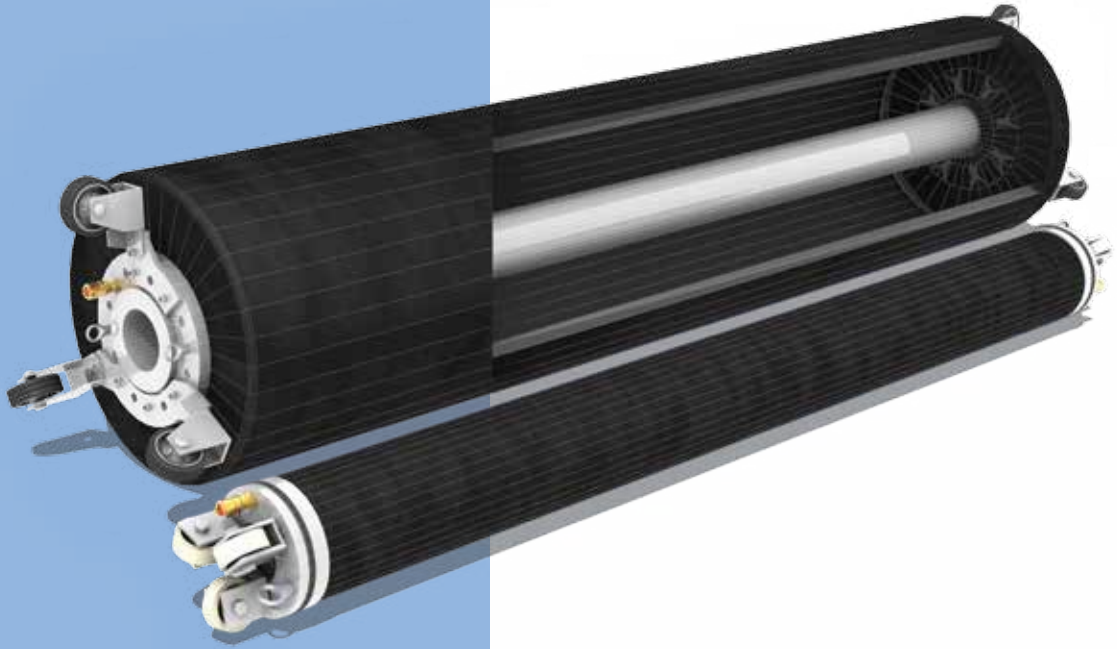
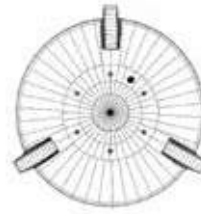
Savatech pneumatic pipe packers are made of special cord-reinforced rubber which provides excellent stretching characteristics and is wear resistant. Our offer includes packers starting with 35 mm diameter and up to 1200 mm in different lengths up to 5 m.

- Flexible packers with bypass and wheels
- Long packers are the most economical products, no wheels and no bypass, suitable for longer sectional repair, as we offer lengths up to 5 m
- Lateral packers are most suitable for repair of pipes with smaller diameters
- Short packers have larger bypass with replaceable sleeve and are suitable for repairs of pipeline joints or shorter pipeline sections



# FLEXIBLE PACKERS

## 2.1



Suitable for repair of damaged pipeline sections and joints.

On each side of a packer are three wheels attached at an angle of 120° to ensure stability and prevent tipping over while moved along the pipe. All installed non rubber parts are resistant to corrosion.

Packers are highly flexible and can be inserted at an angle. They cover pipe diameters from 100 mm up to 1200 mm. Effective packer length is from 600 mm up to 4500 mm.



REPLACEABLE  
RUBBER SLEEVE



HIGLY FLEXIBLE



NON CORRODIVE  
METAL PARTS





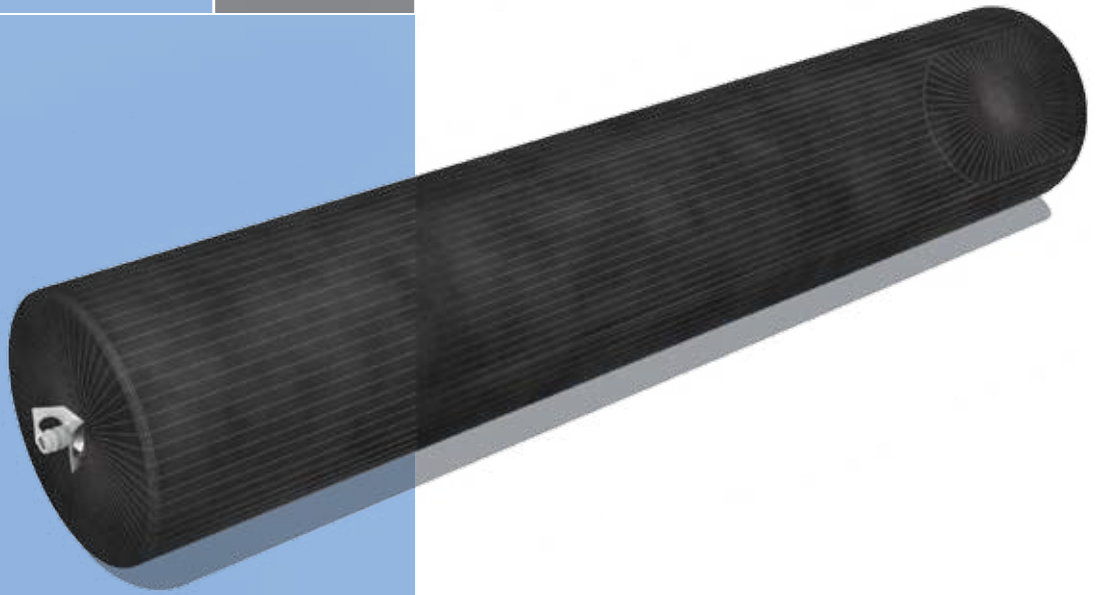
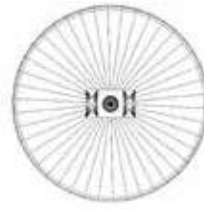
# FLEXIBLE PACKERS

Part number	Nominal size EU		Size usage range		Required inflation pressure (bar)	Product weight (kg)	Rubber body length (mm)	Deflated packer		Bypass diameter (female)
	EU	m	Min. dia. (mm)	Max. dia. (mm)				Total length (mm)	Diameter (mm)	
78214	10-15	1	100	150	2.5	2.1	1000	1080	65	NA
549389	10-15	1.5	100	150	2.5	2.5	1500	1580	65	NA
78266	10-15	2	100	150	2.5	2.8	1900	1980	65	NA
78218	10-15	2.5	100	150	2.5	3.3	2500	2580	65	NA
78231	10-15	3	100	150	2.5	4.2	3000	3080	65	NA
78244	10-15	4	100	150	2.5	5	4000	4080	65	NA
78283	10-15	5	100	150	2.5	6	4900	4980	65	NA
77240	15-25	1	150	250	2	8	1000	1210	112	2"
60853	15-25	1.5	150	250	2	9.5	1500	1710	112	2"
77614	15-25	2	150	250	2	11	1900	2110	112	2"
60846	15-25	2.5	150	250	2	12.7	2500	2710	112	2"
60497	15-25	3	150	250	2	14.5	3000	3210	112	2"
516143	15-25	3.5	150	250	2	15.8	3500	3710	112	2"
60556	15-25	4	150	250	2	17.4	4000	4210	112	2"
60585	15-25	5	150	250	2	21.4	4900	5110	112	2"
77241	30-40	1	300	400	1.5	19.2	1120	1370	210	3"
514320	30-40	1.5	300	400	1.5	21.6	1620	1840	210	3"
77680	30-40	2	300	400	1.5	25	2120	2340	210	3"
60525	30-40	2.5	300	400	1.5	30	2620	2810	210	3"
60587	30-40	3	300	400	1.5	33	3120	3300	210	3"
60593	30-40	4	300	400	1.5	41.5	4120	4280	210	3"
60594	30-40	5	300	400	1.5	47	4880	5060	210	3"
77242	45-60	1	450	600	1.2	34.5	1120	1350	340	3"
517034	45-60	1.5	450	600	1.2	36.6	1630	1860	340	3"
78718	45-60	2	450	600	1.2	41.6	2020	2240	340	3"
60526	45-60	2.5	450	600	1.2	50	2650	2870	340	3"
78860	45-60	3	450	600	1.2	53	3000	3220	340	3"
65027	60-80	1.5	600	800	1	46.8	1620	1840	400	3"
60120	60-80	2	600	800	1	52	2040	2280	400	3"
60527	60-80	2.5	600	800	1	61	2650	2820	400	3"
60598	60-80	3	600	800	1	65	2880	3060	400	3"
78015	80-100	1.5	800	1000	1	68.2	1540	1780	535	4"
79186	100-120	2	100	1200	1	75	2000	2240	535	4"



# LONG PACKERS

## 2.2



Savatech long packers are designed in the most economical way (they are not equipped with wheels and bypass) but their performance is still excellent.

On each side of a rubber sleeve rubber flanges are mounted and equipped with quick action couplings for inflating and deflating.

They are also equipped with two eye bolts on each side for fixing a rope for insertion, transporting and pulling out.



MOST ECONOMICAL  
CONSTRUCTION



AVAILABLE IN  
LENGTH UP TO 5 m



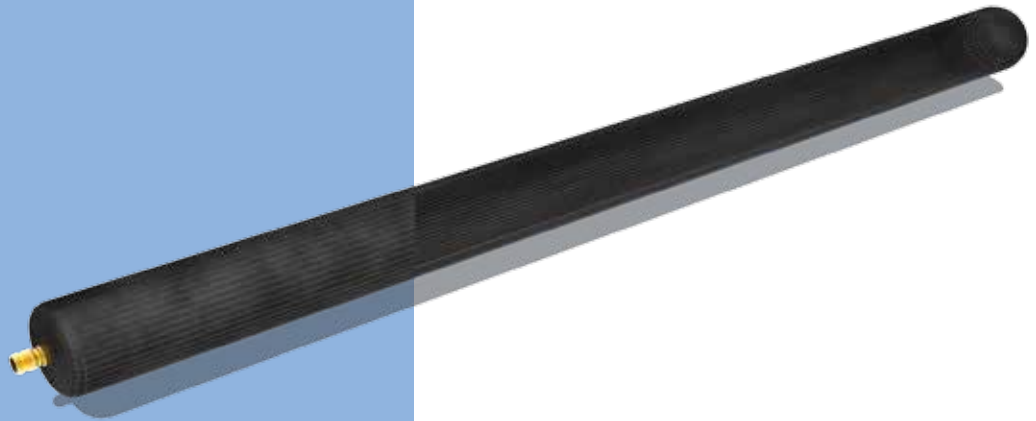
# LONG PACKERS

Part number	Nominal size EU		Size usage range		Required inflation pressure (bar)	Product weight (kg)	Rubber body length (mm)	Deflated packer	
			Min. dia. (mm)	Max. dia. (mm)				Diameter (mm)	Length (mm)
	EU	m							
541996	20-30	1	200	300	1.5	4.9	1000	145	1100
78256	20-30	1.5	200	300	1.5	5.7	1500	145	1600
67042	20-30	2	200	300	1.5	6.5	2000	145	2100
78257	20-30	2.5	200	300	1.5	8.5	2500	145	2600
77386	20-30	3	200	300	1.5	10.8	3000	145	3100
78258	20-30	4	200	300	1.5	13.6	4000	145	4100
77237	20-30	5	200	300	1.5	18.4	4900	145	5000
281323	30-40	1	300	400	1.5	7.7	1000	245	1100
78259	30-40	1.5	300	400	1.5	13	1500	245	1600
77925	30-40	2	300	400	1.5	15.5	2000	245	2100
77926	30-40	2.5	300	400	1.5	16.7	2500	245	2600
78260	30-40	3	300	400	1.5	20	3000	245	3100
78261	30-40	4	300	400	1.5	26.3	4000	245	4100
78262	30-40	5	300	400	1.5	33.4	4900	245	5000
560468	40-50	1	400	500	1	18.9	1000	340	1100
78263	40-50	1.5	400	500	1	24.5	1500	340	1650
77553	40-50	2	400	500	1	27.7	2000	340	2150
77239	40-50	2.5	400	500	1	28	2500	340	2650
78264	40-50	3	400	500	1	30.5	3000	340	3100
78265	40-50	4	400	500	1	33	4000	340	4150
77238	40-50	5	400	500	1	38	5000	340	5150
60179	50-60	1.5	500	600	0.8	30	1500	405	1650
67040	50-60	2	500	600	0.8	34	2000	405	2150
60190	50-60	2.5	500	600	0.8	37.8	2500	405	2650
70072	50-60	3	500	600	0.8	40.8	3000	405	3150
70218	50-60	4	500	600	0.8	46	4000	405	4150
70066	50-60	5	500	600	0.8	51.5	5000	405	5150
60758	60-80	1.5	600	800	0.6	47	1500	535	1650
60759	60-80	2	600	800	0.6	51	1900	535	2050
60760	60-80	2.5	600	800	0.6	54.5	2500	535	2650
60761	60-80	3	600	800	0.6	58	3000	535	3150
60763	60-80	4	600	800	0.6	66	4000	535	4150
60764	60-80	5	600	800	0.6	75	5000	535	5150



# LATERAL PACKERS HP-K

## 2.3



Savatech lateral packers are suitable for repairs of pipes with smaller diameters, especially in house connection installations. These packers are rounded on both ends in order to simplify handling and insertion. They are equipped with quick action couplings and eyelet bolts.



AVAILABLE IN  
DIAMETERS FROM  
35 mm UP TO  
200 mm



SUITABLE  
FOR HOUSE  
CONNECTION  
PIPELINE REPAIRS



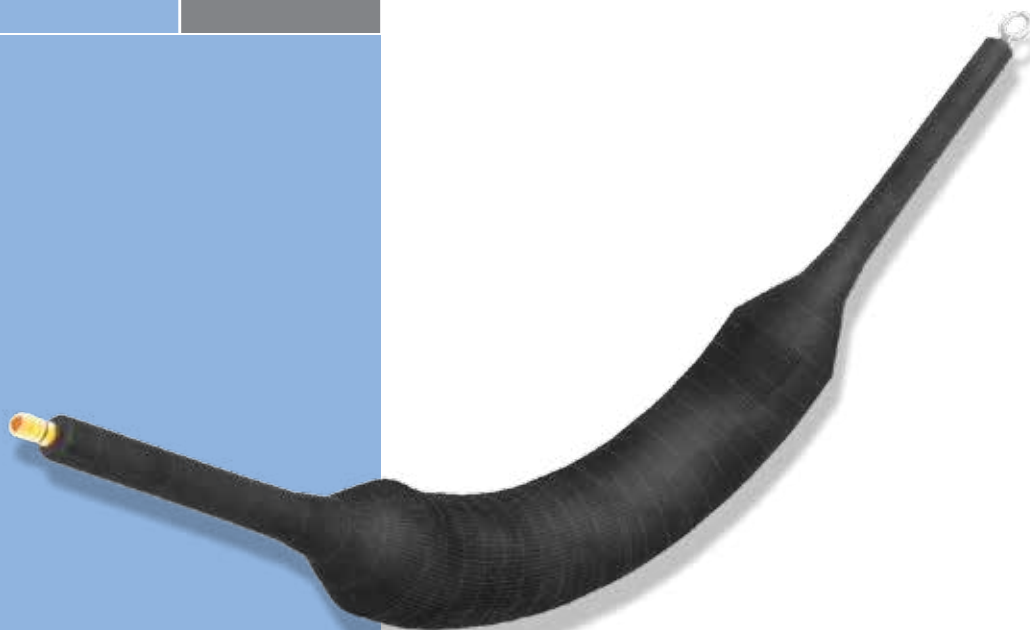
# LATERAL PACKERS

Part number	Nominal size EU		Size usage range		Required inflation pressure (bar)	Product weight (kg)	Rubber body length (mm)	Deflated packer	
			Min. dia. (mm)	Max. dia. (mm)				Diameter (mm)	Length (mm)
	EU	m							
529897	3.5-5	0.7	35	50	2.5	0.4	700	26	765
530785	3.5-5	1	35	50	2.5	0.5	1000	26	1065
530786	3.5-5	1.5	35	50	2.5	0.7	1500	26	1565
530787	3.5-5	2	35	50	2.5	0.8	2000	26	2065
538491	3.5-5	3	35	50	2.5	1.1	3000	26	3065
542187	5-7.5	0.7	50	75	3	0.6	700	30	765
281246	5-7.5	1	50	75	3	0.7	1000	30	1065
543422	5-7.5	1.5	50	75	3	0.8	1500	30	1565
543423	5-7.5	2	50	75	3	1.1	2000	30	2065
543431	5-7.5	3	50	75	3	1.4	3000	30	3065
60052	7-10	0.6	70	100	2.5	0.6	600	45	720
60053	7-10	1	70	100	2.5	0.8	1000	45	1120
60059	7-10	1.5	70	100	2.5	1.1	1500	45	1620
60060	7-10	2	70	100	2.5	1.4	2000	45	2120
559830	7-10	2.5	70	100	2.5	1.6	2500	45	2620
60061	7-10	3	70	100	2.5	1.9	3000	45	3120
60069	7-10	4	70	100	2.5	2.4	4000	45	4120
60081	7-10	5	70	100	2.5	2.8	4900	45	5020
60307	10-15	0.6	100	150	2.5	1.1	600	65	720
60308	10-15	1	100	150	2.5	1.5	1000	65	1120
60309	10-15	1.5	100	150	2.5	1.9	1500	65	1620
60311	10-15	2	100	150	2.5	2.4	2000	65	2120
60224	10-15	2.5	100	150	2.5	2.8	2500	65	2620
60461	10-15	3	100	150	2.5	3.2	3000	65	3120
60492	10-15	4	100	150	2.5	4	4000	65	4120
60298	10-15	5	100	150	2.5	5.4	4900	65	5020
60314	15-20	0.6	150	200	2.5	1.9	600	85	720
60330	15-20	1	150	200	2.5	2.5	1000	85	1120
60331	15-20	1.5	150	200	2.5	3.1	1500	85	1620
60343	15-20	2	150	200	2.5	3.8	2000	85	2120
60516	15-20	3	150	200	2.5	5	3000	85	3120
60955	15-20	4	150	200	2.5	6.3	4000	85	4120
60005	15-20	5	150	200	2.5	8.6	4900	85	5020



# PACKERS HP-T90°

## 2.4



Unique construction and excellent choice of rubber compound of Savatech packers HP-T90° provides excellent possibility of repairs in bents of pipelines of 45°, 60°, 90°. Rigid parts of Savatech packers HP-90° are made as short as possible in order to ease insertion and pulling packers through pipeline bends. Having in mind problems that arise at inserting and pushing packers through pipeline bends the rigid parts of packer ends are made as short as possible.



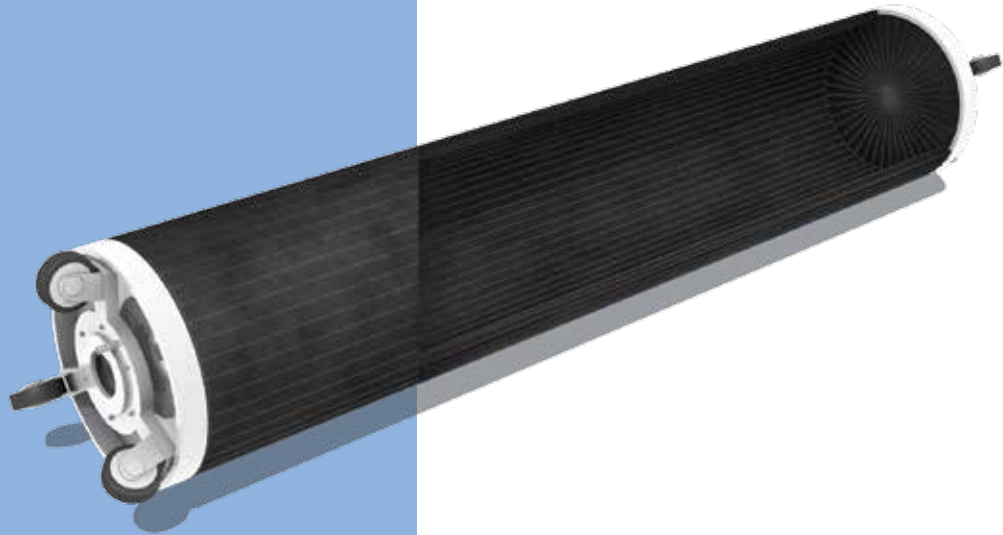
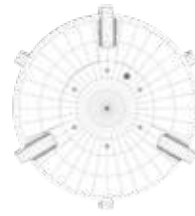
SUITABLE FOR PIPE  
REPAIRS IN ANGLES  
45°-90°

### PACKERS HP-T90°

Part number	Nominal size		Size usage range		Required inflation pressure (bar)	Product weight (kg)	Rubber body length (mm)	Deflated packer	
	EU	m	Min. dia. (mm)	Max. dia. (mm)				Diameter (mm)	Length (mm)
281856	35-50	0.7	35	50	3	0.8	700	26	750
558628	50-70	0.7	50	70	2	0.7	600	30	750
281774	70-80	0.6	70	80	2	0.8	550	45	650
525957	70-80	1	70	80	2	0.9	1000	45	1120
525958	70-80	1.5	70	80	2	1.2	1500	45	1620
525960	100-125	1	100	125	2	2	1000	65	1120
525961	100-125	1.5	100	125	2	2.8	1500	65	1620
525963	150-165	1	150	165	2	3.2	1000	85	1120
525964	150-165	1.5	150	165	2	4.1	1500	85	1620
525959	180-205	1	180	205	2	5.6	1000	105	1120
525962	180-205	1.5	180	205	2	6.1	1500	105	1620
281628	200-250	1	200	250	2	8.4	1000	130	1120
560617	200-250	1.5	200	250	2	10.5	1500	130	1620
282151	250-350	1.5	250	350	2	13.6	1500	140	1620

# SHORT PACKERS

# 2.5



Savatech short packers have a replaceable double-layer rubber sleeve mounted on a PPH core.

On both sides of the packer three wheels are attached at an angle of 120° to prevent tipping over while pulling along the pipeline.

The effective packer length is 600 mm therefore they are suitable for repair of pipeline joints or repair of shorter pipeline sections along with insertion of stainless steel shells.



31



**NON CORRODIVE  
METAL PARTS**

## SHORT PACKERS

Part number	Nominal size		Size usage range		Required inflation pressure (bar)	Product weight (kg)	Rubber body length (mm)	Deflated plug		Bypass diameter (mm)
	EU	m	Min. dia. (mm)	Max. dia. (mm)				Diameter (mm)	Length (mm)	
<b>76646</b>	15-20	0.8	150	200	2	6.3	800	115	960	80
<b>76647</b>	25-30	0.8	250	300	2	12.8	800	205	1010	160
<b>76821</b>	30-35	0.8	300	350	1.5	17.2	800	250	1010	200
<b>76648</b>	35-40	0.8	350	400	1.5	19.1	800	305	1010	260
<b>76649</b>	45-50	0.8	450	500	1.5	29.7	800	380	1010	325
<b>78247</b>	60-70	0.97	600	700	1	50.2	970	465	1180	390

THIS IS US

3

We are a division of Savatech d.o.o., the mainstay of the development of rubber manufacturing within the CGS Group.

#### QUALITY

Our production facilities are ISO 9001:2008, ISO 14001:2004 and OSHAS 18001:2007 certified. We take safety seriously; therefore our products undergo many inspections and testing in order to assure guaranteed safe performance of our products on site.

#### RESPONSIBILITY

With a responsible attitude to our goals, associates and the natural and social environment we implement the principles of sustainable development.

#### PROFFESIONAL PARTNER SUPPORT

Experienced personnel providing combination of professional and caring approach, ability to offer tailor made solutions and quick delivery time ensures optimal partner support.

#### R&D SUPPORT

Dedicated personnel, manufacturing experience from 1920 and day to day communication with our partners is creating leading position of our company in specialized niches. Manufacturing tradition of heavy duty inflatable products leads us to constant improvements and ability to design tailor made solutions for your specific needs.

Your comments & requests are appreciated on following email address: [info.eko@savatech.si](mailto:info.eko@savatech.si)





# WARRANTY

# 4



## 1. WARRANTY STATEMENT

1.1 Manufacturer warrants for twelve (12) months following the delivery of Pneumatic pipe plugs and packers (» Products«) that such Products shall be free from defects in material and workmanship and shall, when delivered, conform to technical specifications contained in this catalogue. If any of the Products are found to be defective and if Manufacturer acknowledges such claim as justified, such Products shall be handled pursuant to provisions of this warranty statement (Warranty)

1.2 Products, which may be sold by the Manufacturer but are not manufactured by it are not subject to this Warranty and are sold exclusively with warranties, if any, by their original manufacturer.

## 2. MANUFACTURER'S RESPONSIBILITY

2.1. Any claim pursuant to this Warranty shall be presented to the Manufacturer in writing within the earlier of (I) eight (8) days following the date the Buyer discovered a defect, or (II) twelve (12) months following the date of delivery, otherwise the Buyer shall forfeit any claim pursuant to this Warranty

2.2 Provided the Manufacturer is duly presented with a justified claim according to the provisions of this Warranty, the Manufacturer may, at its sole discretion, either:

2.2.1 Repair the Product;

2.2.2 Replace those components of the Product, which do not conform to the Warranty;

2.2.3 Replace the Product, if repair is not possible or reasonable; or

2.2.4 Reimburse the considerations for the Product or its component part.

2.3. After performing any of the above actions, the Manufacturer shall be discharged from any other liabilities whatsoever towards the Buyer, to the extent not expressly stated differently in this Warranty.

2.4 To obtain performance under this Warranty, the Products suspected not to be in compliance with art. 1.1. shall be returned freight prepaid for inspection to SAVATECH d.o.o., Škofjeloška c. 6, 4000 Kranj, the Republic of Slovenia. Manufacturer shall resolve (either confirm or reject) the claim within forty-five (45) days as of the date it shall receive it. Manufacturer's decision is final

## 3. TRANSPORTATION REIMBURSEMENT

3.1. In case the Manufacturer repairs or replaces the Product at its expense or reimburses the consideration, the Manufacturer will reimburse a party claiming a defect (dealer or the Buyer, depending on each case) with a credit note, the same surface freight amount the distributor or the Buyer had when returning the Product to the Manufacturer.

## 4. EXCLUSIONS AND LIMITATIONS

4.1. This Warranty shall not apply to any Products which have not been utilized for the purpose as specified by the Manufacturer or which have not been handled properly, that is, but not limited to,

which have been subject to misuse, mishandling, misapplication, neglect (including, but not limited to, use of unauthorised components or attachments), or if adjustments or repair have been performed by anyone other than the Manufacturer or one of its authorised agents with an approval of the Manufacturer.

4.2 Manufacturer shall not be held liable for any deficiencies in Products manufactured according to drawings, project drafts or Specifications provided by the Buyer;

4.3 Manufacturer shall not be held liable for any deficiencies resulting from ordinary wear and tear, intentional damage or damage resulting from negligence of the buyer or third persons, neglect, abnormal operating conditions, non-compliance with Manufacturer's instructions (in whatever form), misuse, change and repairs of Products without the Manufacturer's approval or damages entailing events beyond the Manufacturer's reasonable control, such as, but not limited to;

- Force Majeure, explosion, flood, storm, fire or accident or other acts of god;

- War or threat of war, sabotage, insurrection, riots or requisition;

- Any and all restrictions stemming from subsequent change in legal regulations in whatever form (laws, by-laws, ordinances, decrees... all laws, restrictions, regulations, by laws, prohibitions or any ordinance);

- Other measures by any of the organs of the state or local authorities (including, but not limited to, import and export regulations or embargo);

- strikes, lock-outs or other industrial measures or trade disputes (including Manufacturer's employees or third party);

- Difficulties with supply of raw materials, work force, fuel, parts or machinery;

- Power blackout, break of machinery.

4.4 Manufacturer shall not be held liable if the consideration has not been completely settled within the agreed term;

4.5. Manufacturer shall not be held liable for any indirect, consequential damages or any punitive damages or any damages having a comparable effect nor for the loss of profit;

## 5. GENERAL

5.1 This Warranty is in lieu of all other Warranties expressed or implied, including those of merchantability or fitness for any purpose not expressly set forth herein. Notwithstanding the previous sentence, Warranty may be additionally be limited by the provisions of each individual contract in which case such additional limitations shall apply.

5.2 No statement or assurance of the Manufacturer, by words of action, other than as set forth herein shall constitute a Warranty.

5.3. This Warranty is subject to the laws of the Republic of Slovenia.

# MATERIALS AND TABLE OF RESISTANCE

# 5

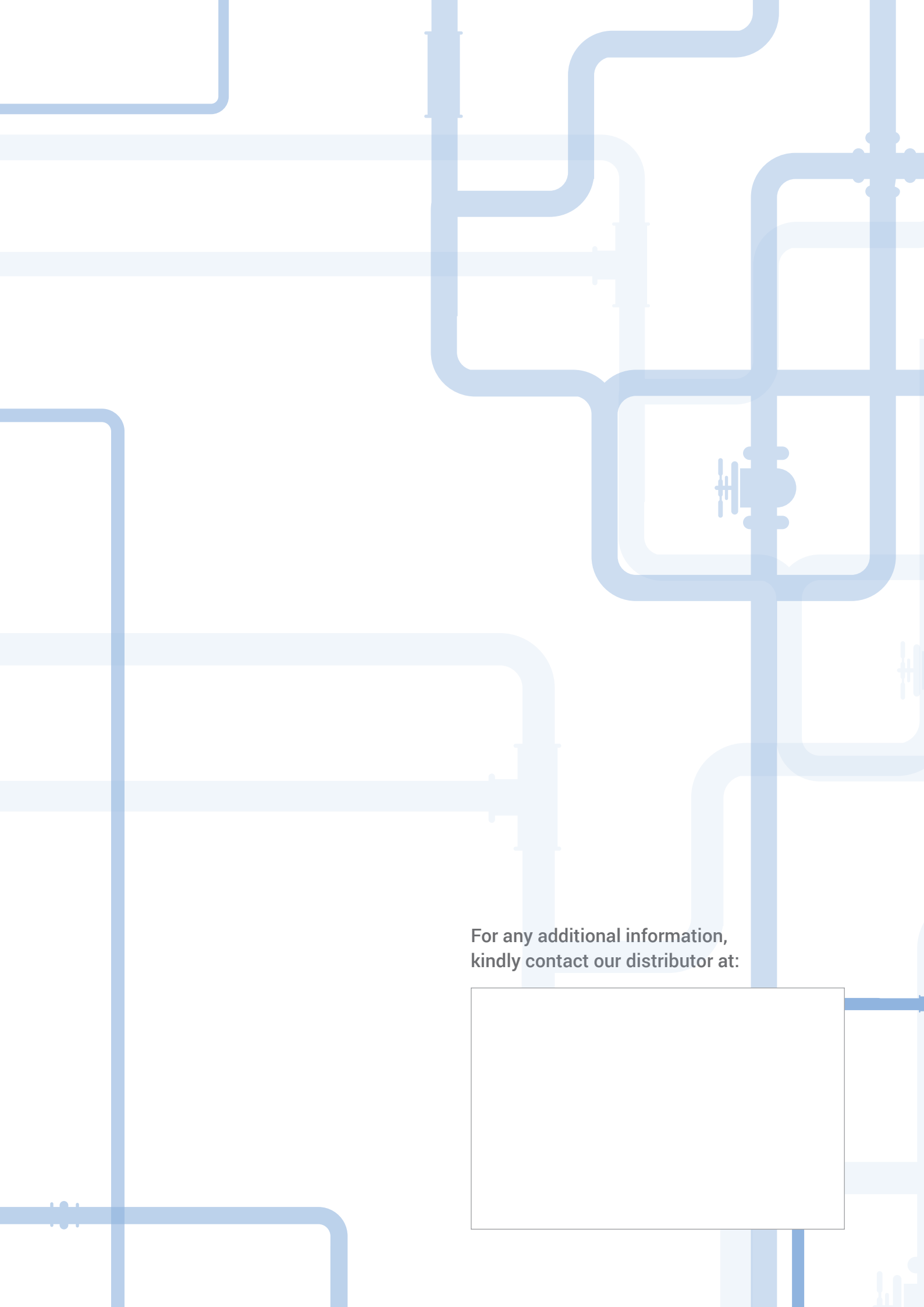
## MATERIALS AND TABLE OF RESISTANCE BUILT IN MATERIALS

Product type	Rubber	Reinforce- ment	Other compo- nents
Pneumatic plug, rehabilitation packer	A	None, Rayon, Kevlar cord	Aluminium, steel, brass, hot galvanized iron
Pneumatic plug resistant to oil	B	Rayon, Kevlar cord	Brass

## TABLE OF RESISTANCE

Chemical	Conc. (%)	Temp. (OC)	A	B
Acetone		RT	0	-
Acetylene			+	+
Ammonium Hydroxide	10	RT	+	+
	conc	RT	+	0
Aniline		RT	0	-
		100	-	-
Benzene		RT	-	-
Boric Acid	10	100	+	+
Brake Fluid (Vegetable)		50	+	-
Butanol		50	+	+
		100	-	+
Butyric Acid		RT	-	-
Calcium Hydroxide		100	+	0
Calcium Hypochlorite	15	RT	+	-
Chloric Acid	20	RT	-	-
Diesel Oil			-	+
Ethanol		50	+	+
Ether		RT	-	0
Formaldehyde	40	RT	+	+
	40	70	-	-
Glycerol (Glycerine)		100	+	+
Hexanol		RT	+	0
Hydrogen Peroxide	30	RT	-	-
	90	RT	-	-
Kerosene		70	-	+
Methanol		50	+	+
Methyl Chloride			-	-
Milk			+	+
Mineral Oil No. 1		100	-	+
Mineral Oil No. 2		100	-	+
Mineral Oil No. 3		100	-	+
Naphtha		RT	-	+
Natural Gas			-	+
Nitric Acid Diluted	10	50	0	0
Ozone	50 pphm	40	-	-
Phenol		100	-	-
Phosphoric Acid	60	50	0	-
Propanol		50	+	0
Sodium Hydroxide	12	100	+	+
	25	100	+	-
Sodium Hypochlorite	10	50	0	-
Sulfur Hexafluoride			-	-
Sulfuric Acid	10	100	+	-
	20	RT	+	+
	50	100	+	+
	60	100	-	-
	75	100	-	-
96	RT	-	-	
Toluene		RT	-	-

+ Resistant, 0 Conditionally resistant, - non-resistant

The background of the page features a complex network of blue lines representing pipes and valves. The lines are of varying thicknesses and are arranged in a way that suggests a technical or industrial setting. Some lines are solid blue, while others are lighter and semi-transparent. There are several valve symbols, which are small icons with a central circle and radiating lines, placed at various points where the pipes intersect or change direction. The overall aesthetic is clean and modern, with a focus on geometric shapes and a monochromatic color palette.

For any additional information,  
kindly contact our distributor at:

